

FACT BOOK

2001/3

長瀬産業株式会社
NAGASE & CO.,LTD.

主要財務指標 Summary of Financial Data

連結 Consolidated

(百万円 / ¥millions)

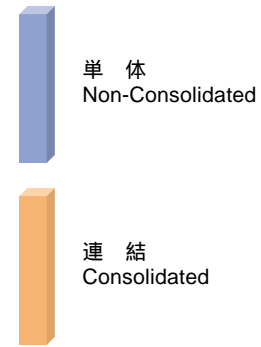
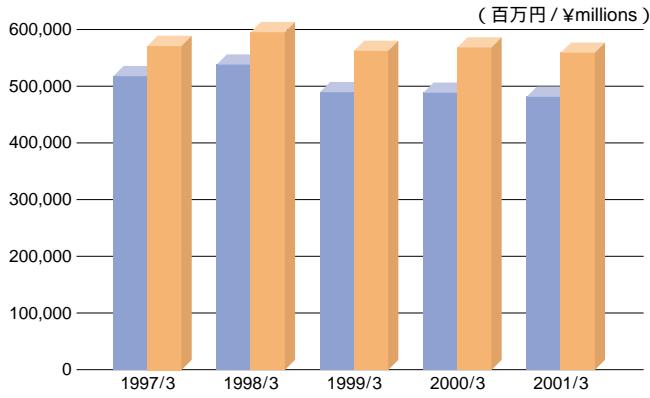
		1997/3	1998/3	1999/3	2000/3	2001/3
売上高	Net Sales	571,947	596,127	563,222	568,293	559,372
売上総利益	Gross Profit	53,930	52,844	53,214	55,287	55,140
営業利益	Operating Income	8,468	8,208	7,791	8,147	7,752
経常利益	Ordinary Income	9,797	8,588	8,501	9,885	10,282
当期純利益	Net Income	5,688	4,905	3,560	6,371	4,945
総資産額	Total Assets	330,686	300,781	298,524	316,657	353,776
純資産額	Net Assets	118,914	122,530	125,929	134,838	153,498
一株当たり純資産(円)	Book Value per Share(¥)	785.29	809.17	862.06	952.67	1,104.81
一株当たり当期純利益(円)	Earnings per Share(¥)	37.57	32.39	23.76	44.25	35.28

単体 Non-Consolidated

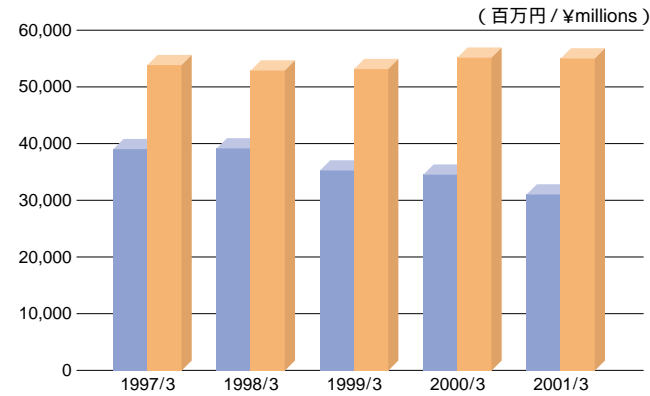
(百万円 / ¥millions)

		1997/3	1998/3	1999/3	2000/3	2001/3
売上高	Net Sales	518,119	538,756	490,672	489,639	481,294
売上総利益	Gross Profit	39,052	39,203	35,815	34,496	30,803
営業利益	Operating Income	7,733	7,349	5,392	4,359	2,280
経常利益	Ordinary Income	8,894	7,578	6,753	6,020	5,697
当期純利益	Net Income	5,115	4,360	3,464	4,127	3,004
総資産額	Total Assets	283,223	252,001	241,229	250,099	284,772
純資産額	Net Assets	99,114	102,193	102,031	105,963	121,970
発行済株式数(千株)	Number of Shares Outstanding(Thousands of Shares)	151,428	151,428	146,079	141,537	138,937
一株当たり純資産(円)	Book Value per Share(¥)	654.53	674.87	698.47	748.66	877.88
一株当たり当期純利益(円)	Earnings per Share(¥)	33.78	28.80	23.11	28.65	21.42

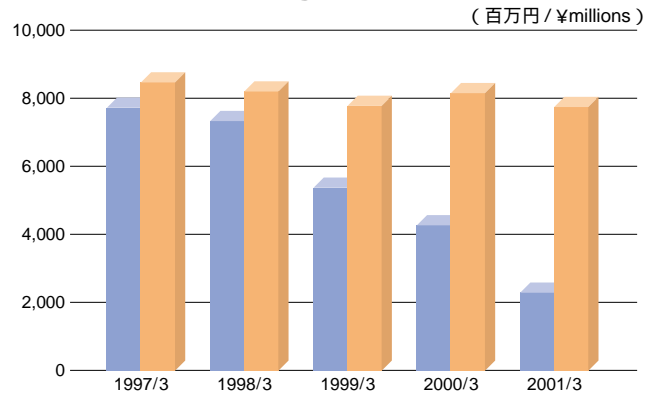
売上高 Net Sales



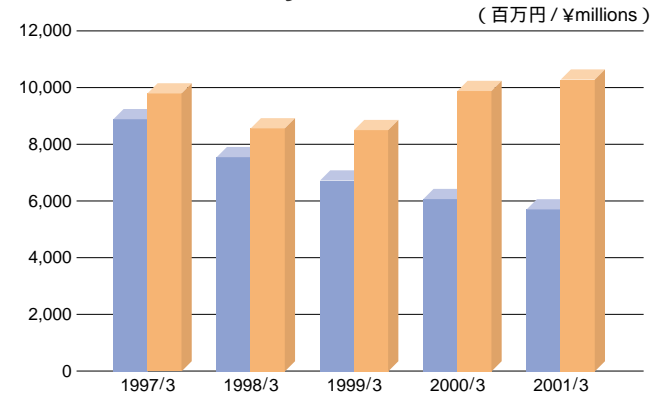
売上総利益 Gross Profit



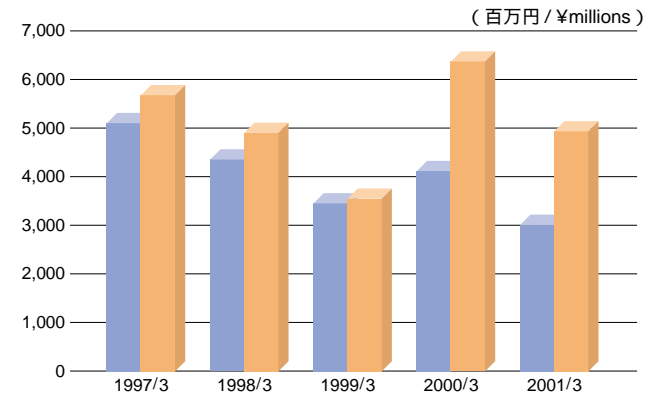
営業利益 Operating Income



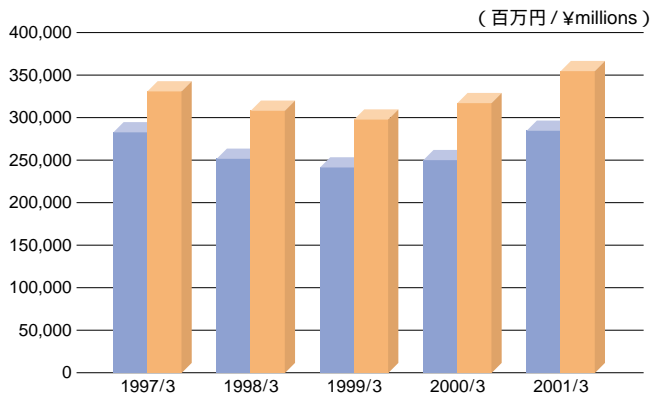
経常利益 Ordinary Income



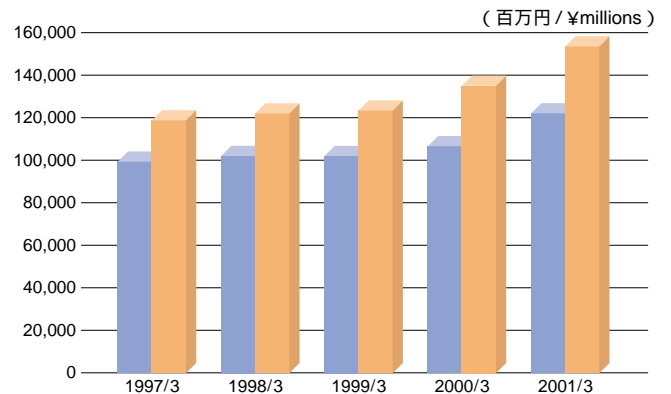
当期純利益 Net Income



総資産額 Total Assets



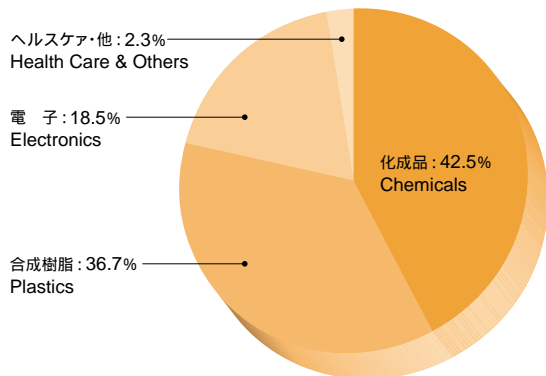
純資産額 Net Assets



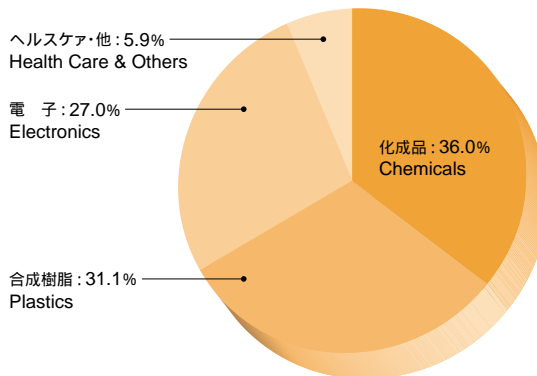
事業別売上高及び売上総利益 Sales & Gross Profit by Business Group

売上高と売上総利益の構成比 Sales & Gross Profit Composition by Business Group (2001/3)

売上高 Sales

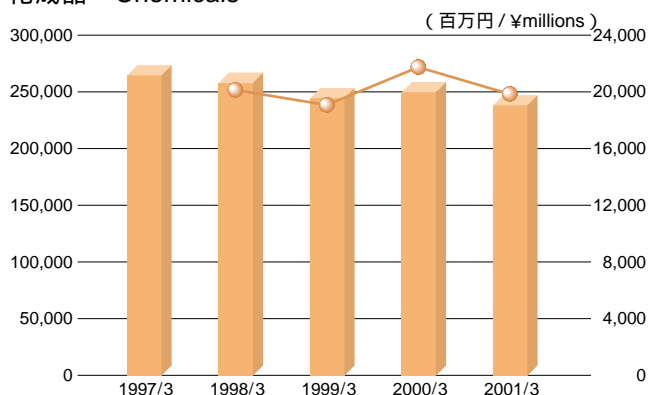


売上総利益 Gross Profit

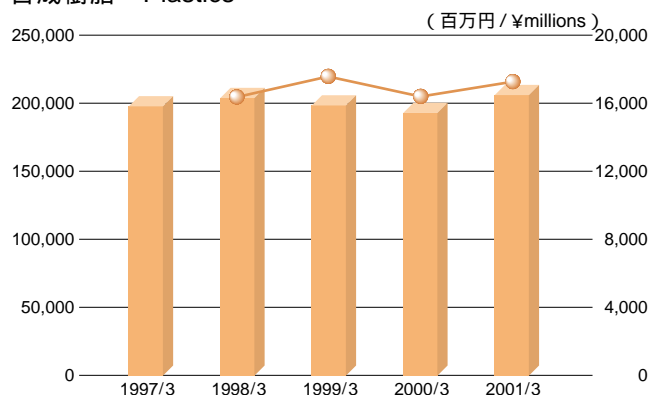


売上高 Sales
売上総利益 Gross Profit

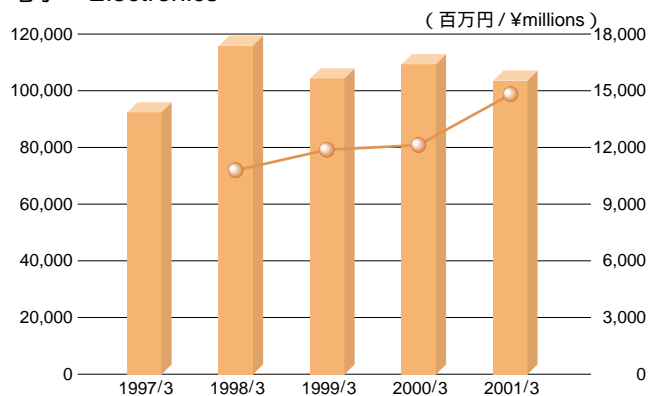
化成品 Chemicals



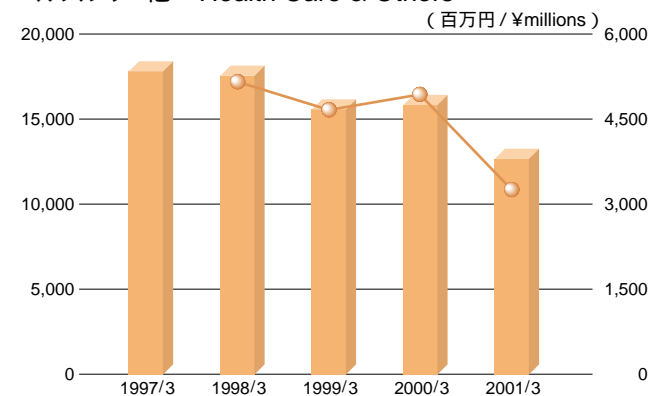
合成樹脂 Plastics



電子 Electronics



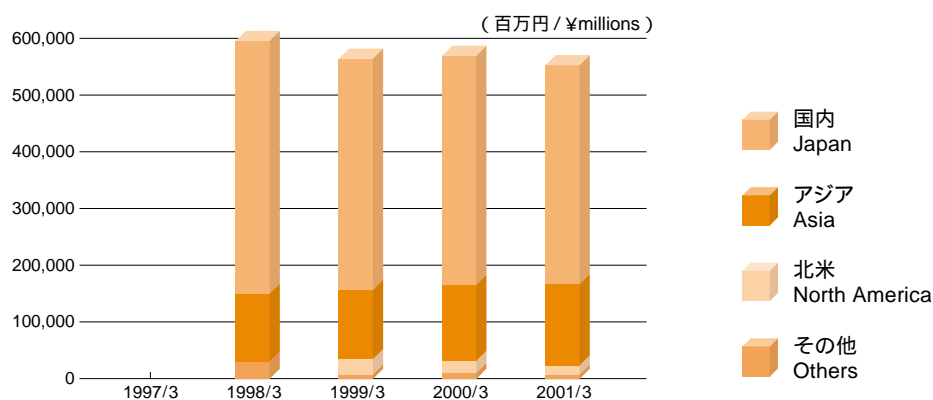
ヘルスケア・他 Health Care & Others



(百万円/¥millions / %)

			1997/3	1998/3	1999/3	2000/3	2001/3
化成品 Chemicals	売上高 Sales		264,205 (46.2)	258,293 (43.3)	244,067 (43.3)	249,977 (44.0)	237,871 (42.5)
	売上総利益 Gross Profit			20,326	19,142	21,864	19,866
合成樹脂 Plastics	売上高 Sales		197,401 (34.5)	204,718 (34.3)	199,188 (35.4)	192,710 (33.9)	205,460 (36.7)
	売上総利益 Gross Profit			16,379	17,610	16,437	17,167
電子 Electronics	売上高 Sales		92,464 (16.2)	115,555 (19.4)	104,454 (18.5)	109,770 (19.3)	103,382 (18.5)
	売上総利益 Gross Profit			10,802	11,778	12,101	14,852
ヘルスケア・他 Health Care & Others	売上高 Sales		17,877 (3.1)	17,560 (3.0)	15,510 (2.8)	15,835 (2.8)	12,658 (2.3)
	売上総利益 Gross Profit			5,336	4,682	4,883	3,253
合計 Total	売上高 Sales		571,947 (100.0)	596,127 (100.0)	563,222 (100.0)	568,293 (100.0)	559,372 (100.0)
	売上総利益 Gross Profit			52,844	53,214	55,287	55,140

地域別売上高 Sales by Area

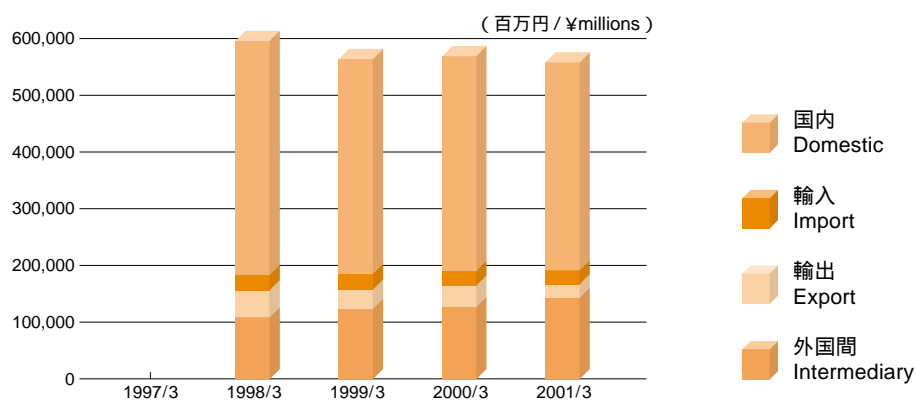


(百万円 / ¥millions / %)

	1997/3	1998/3	1999/3	2000/3	2001/3
国内 Japan		441,114 (74.0)	405,579 (72.0)	404,155 (71.1)	392,555 (70.2)
アジア Asia		126,334 (21.2)	123,534 (21.9)	133,047 (23.4)	145,374 (26.0)
北米 North America		—	25,483 (4.5)	21,296 (3.8)	12,305 (2.2)
その他 Others		28,679 (4.8)	8,625 (1.6)	9,794 (1.7)	9,137 (1.6)
合計 Total		596,127 (100.0)	563,222 (100.0)	568,293 (100.0)	559,372 (100.0)

注)1998/3の北米はその他に含まれています。
 Note: Others include North America in 1998/3.

形態別売上高 Sales by Type of Transaction



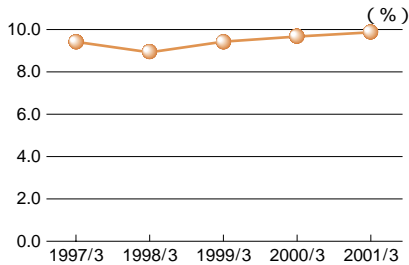
(百万円 / ¥millions / %)

	1997/3	1998/3	1999/3	2000/3	2001/3
国内 Domestic		413,285 (69.3)	379,279 (67.3)	375,895 (66.1)	368,409 (65.9)
輸入 Import		27,828 (4.7)	26,299 (4.7)	28,260 (5.0)	24,145 (4.3)
輸出 Export		46,796 (7.8)	32,395 (5.8)	36,478 (6.4)	26,299 (4.7)
外国間 Intermediary		108,217 (18.2)	125,247 (22.2)	127,659 (22.5)	140,518 (25.1)
合計 Total		596,127 (100.0)	563,222 (100.0)	568,293 (100.0)	559,372 (100.0)

収益性 Profitability

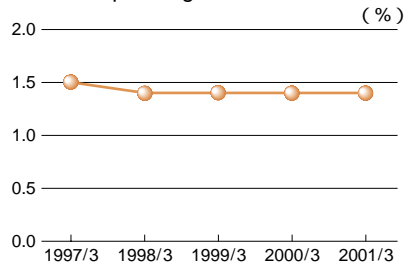
売上高総利益率

Ratio of Gross Profit to Sales



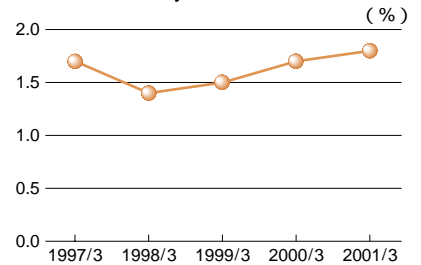
売上高営業利益率

Ratio of Operating Income to Sales



売上高経常利益率

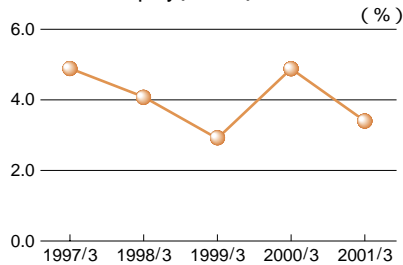
Ratio of Ordinary Income to Sales



		1997/3	1998/3	1999/3	2000/3	2001/3
売上高総利益率(%)	Ratio of Gross Profit to Sales(%)	9.4	8.9	9.4	9.7	9.9
売上高営業利益率(%)	Ratio of Operating Income to Sales(%)	1.5	1.4	1.4	1.4	1.4
売上高経常利益率(%)	Ratio of Ordinary Income to Sales(%)	1.7	1.4	1.5	1.7	1.8

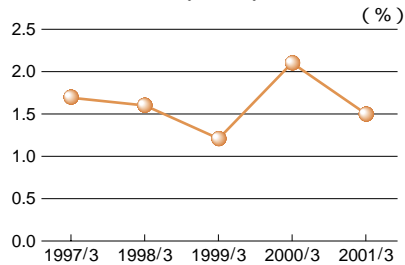
株主資本当期純利益率

Return on Equity(ROE)



総資本当期純利益率

Return on Assets(ROA)



		1997/3	1998/3	1999/3	2000/3	2001/3
株主資本当期純利益率(%)	Return on Equity(ROE)(%)	4.9	4.1	2.9	4.9	3.4
総資本当期純利益率(%)	Return on Assets(ROA)(%)	1.7	1.6	1.2	2.1	1.5

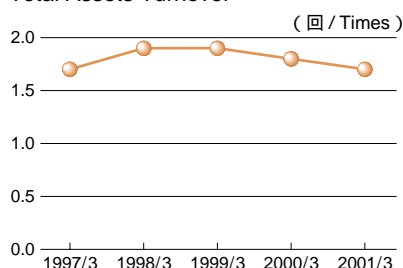
注)株主資本、総資本は期首、期末の平均値です。

Note: Values for net assets and total assets are average values at the beginning and end of the term.

効率性 Efficiency

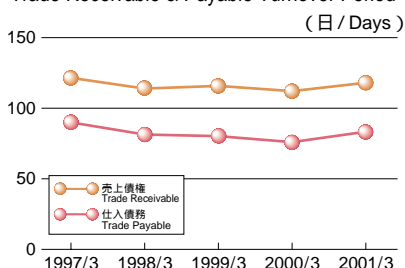
総資本回転率

Total Assets Turnover



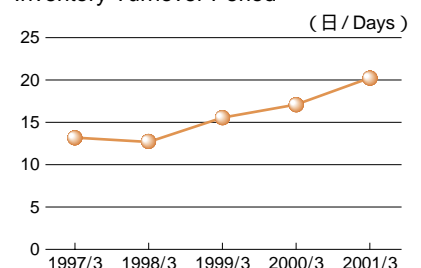
売上債権、仕入債務回転期間

Trade Receivable & Payable Turnover Period



棚卸資産回転期間

Inventory Turnover Period



		1997/3	1998/3	1999/3	2000/3	2001/3
総資本回転率(回)	Total Assets Turnover(Times)	1.7	1.9	1.9	1.8	1.7
売上債権回転期間(日)	Trade Receivable Turnover Period(Days)	120.6	114.5	116.2	112.9	118.7
仕入債務回転期間(日)	Trade Payable Turnover Period(Days)	90.4	81.0	80.1	77.6	84.1
棚卸資産回転期間(日)	Inventory Turnover Period(Days)	13.2	12.8	15.6	17.1	20.2

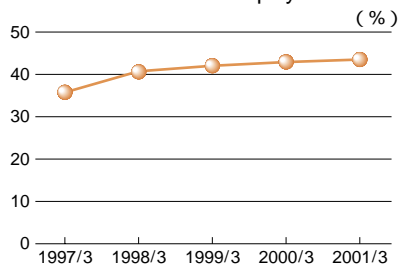
注)総資本、売上債権、仕入債務、棚卸資産は期首、期末の平均値です。

Note: Values for total assets, trade receivable, trade payable and inventory are average values at the beginning and end of the term.

安全性 Safety

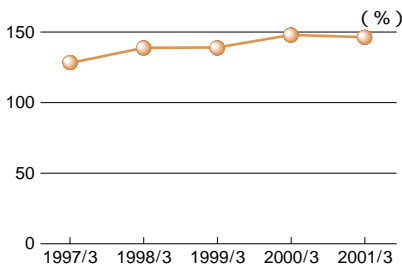
株主資本比率

Ratio of Shareholders' Equity



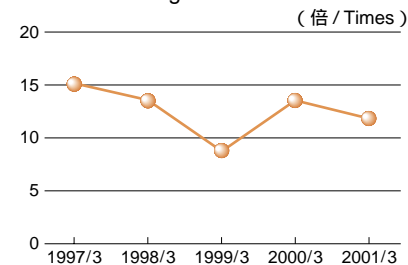
流動比率

Current Ratio



インタレスト・カバレッジ

Interest Coverage Ratio

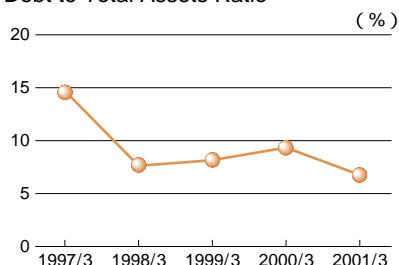


		1997/3	1998/3	1999/3	2000/3	2001/3
株主資本比率(%)	Ratio of Shareholders' Equity(%)	36.0	40.7	42.2	42.6	43.4
流動比率(%)	Current Ratio(%)	128.1	139.5	139.7	147.9	146.5
インタレスト・カバレッジ(倍)	Interest Coverage Ratio(Times)	15.1	13.5	8.9	13.5	11.9

注)インタレスト・カバレッジ=(営業利益+受取利息及び配当金)/支払利息
 Note: Interest Coverage=(Operating Income + Interest and Dividends Received)/Interest Expenses.

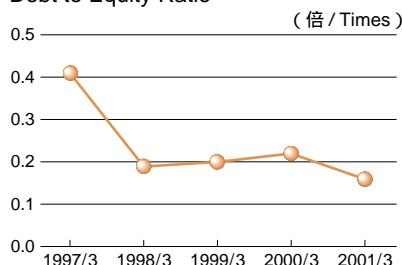
有利子負債比率

Debt to Total Assets Ratio



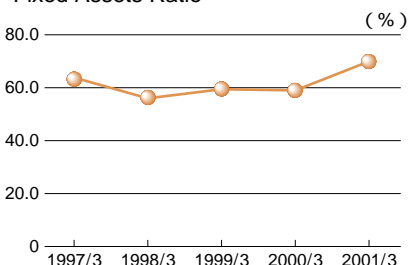
D/Eレシオ

Debt to Equity Ratio



固定比率

Fixed Assets Ratio



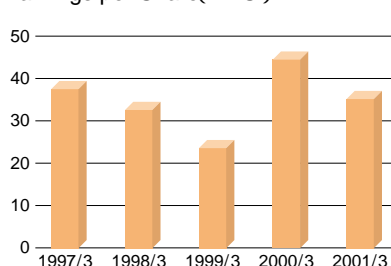
		1997/3	1998/3	1999/3	2000/3	2001/3
有利子負債比率(%)	Debt to Total Assets Ratio(%)	14.6	7.8	8.3	9.4	6.8
D/Eレシオ(倍)	Debt to Equity Ratio(Times)	0.41	0.19	0.20	0.22	0.16
固定比率(%)	Fixed Assets Ratio(%)	63.5	57.2	59.7	59.5	70.0

注)有利子負債比率=有利子負債/総資本
 注)D/Eレシオ=有利子負債/株主資本
 Note: Debt to Total Assets Ratio=(Loans Payable + CP + Bond)/Total Assets.
 Note: D/E Ratio=(Loans Payable + CP + Bond)/Shareholders' Equity.

投資指標 Per Share Data

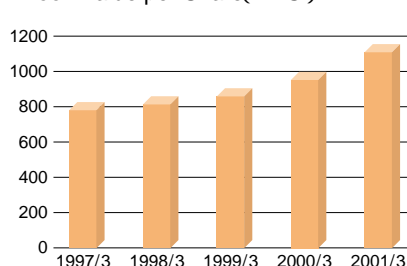
一株当たり当期純利益

Earnings per Share(EPS)



一株当たり純資産

Book Value per Share(BPS)

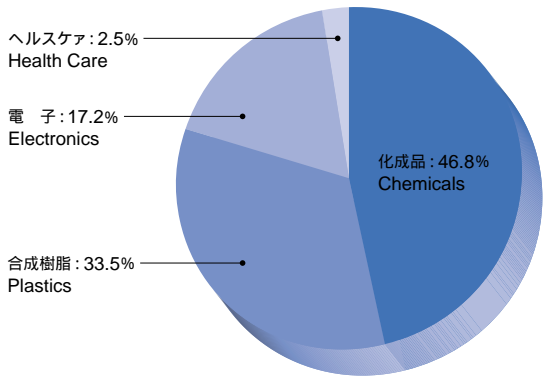


		1997/3	1998/3	1999/3	2000/3	2001/3
一株当たり当期純利益(円)	Earnings per Share(¥)	37.57	32.39	23.76	44.25	35.28
一株当たり純資産(円)	Book Value per Share(¥)	785.29	809.17	862.06	952.67	1,104.81

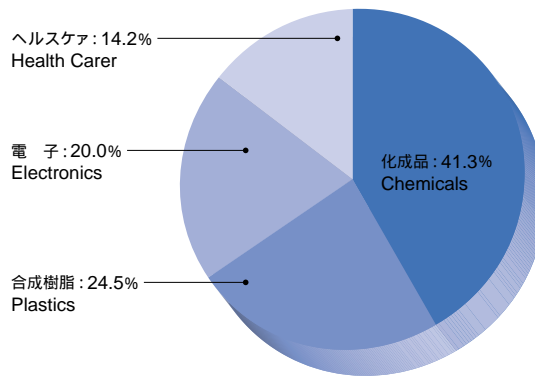
事業別売上高及び売上総利益 Sales & Gross Profit by Business Group

売上高と売上総利益の構成比 Sales & Gross Profit Composition by Business Group (2001/3)

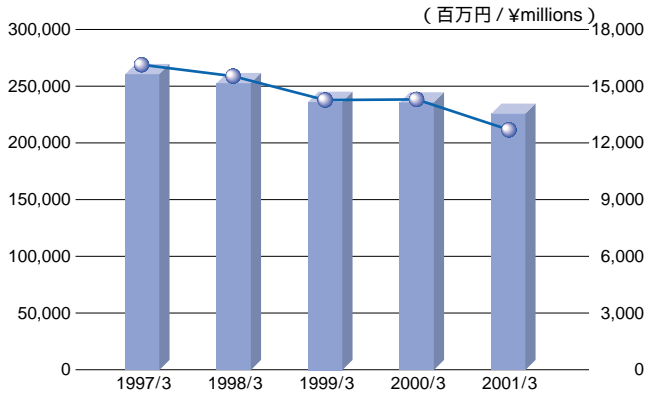
売上高 Sales



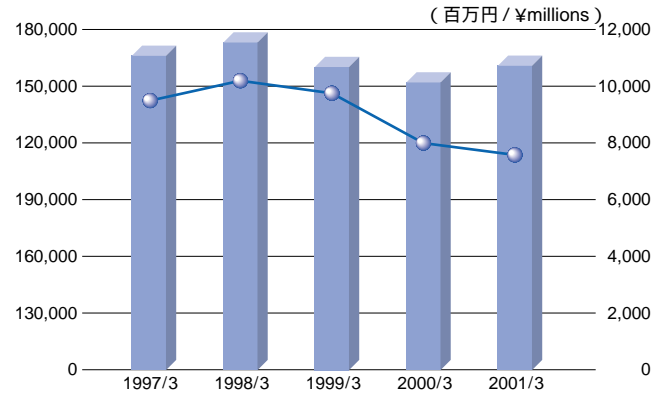
売上総利益 Gross Profit



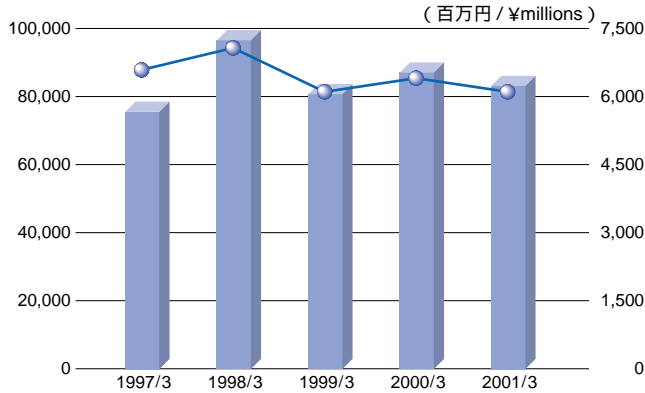
化成品 Chemicals



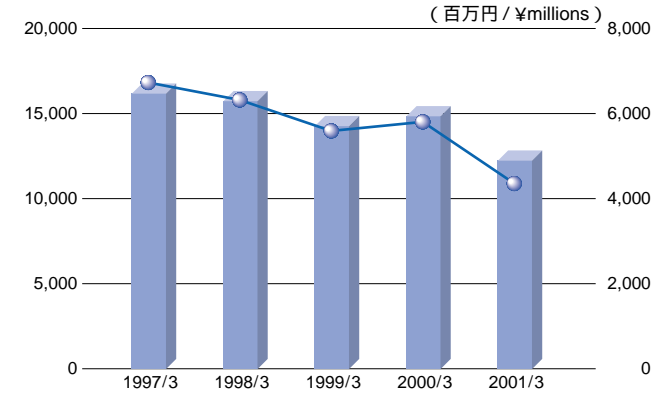
合成樹脂 Plastics



電子 Electronics



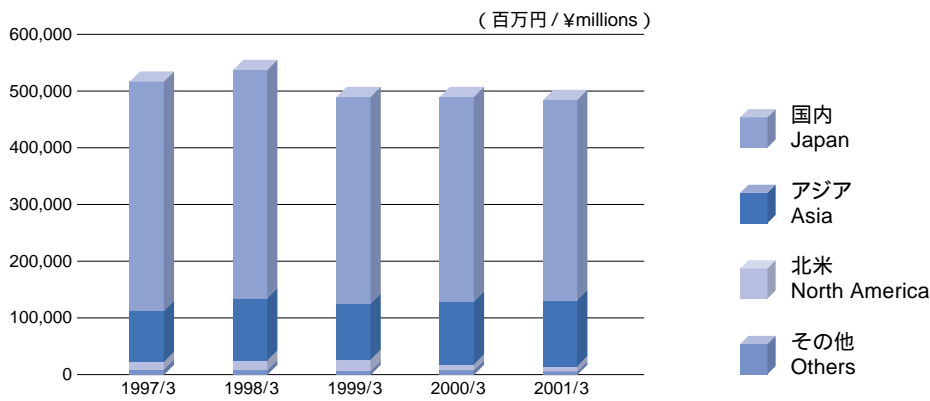
ヘルスケア Health Care



(百万円/¥millions/%)

			1997/3	1998/3	1999/3	2000/3	2001/3
化成品 Chemicals	売上高 Sales		260,348 (50.3)	252,610 (46.9)	235,277 (47.9)	235,381 (48.1)	225,050 (46.8)
	売上総利益 Gross Profit		16,130	15,527	14,241	14,249	12,718
合成樹脂 Plastics	売上高 Sales		166,160 (32.1)	173,791 (32.3)	160,341 (32.7)	152,069 (31.1)	161,208 (33.5)
	売上総利益 Gross Profit		9,508	10,213	9,756	8,004	7,540
電子 Electronics	売上高 Sales		75,452 (14.5)	96,604 (17.9)	80,770 (16.5)	87,296 (17.8)	82,828 (17.2)
	売上総利益 Gross Profit		6,658	7,119	6,167	6,407	6,163
ヘルスケア Health Care	売上高 Sales		16,158 (3.1)	15,749 (2.9)	14,283 (2.9)	14,891 (3.0)	12,207 (2.5)
	売上総利益 Gross Profit		6,755	6,343	5,649	5,834	4,380
合計 Total	売上高 Sales		518,119 (100.0)	538,756 (100.0)	490,672 (100.0)	489,639 (100.0)	481,294 (100.0)
	売上総利益 Gross Profit		39,052	39,203	35,815	34,496	30,803

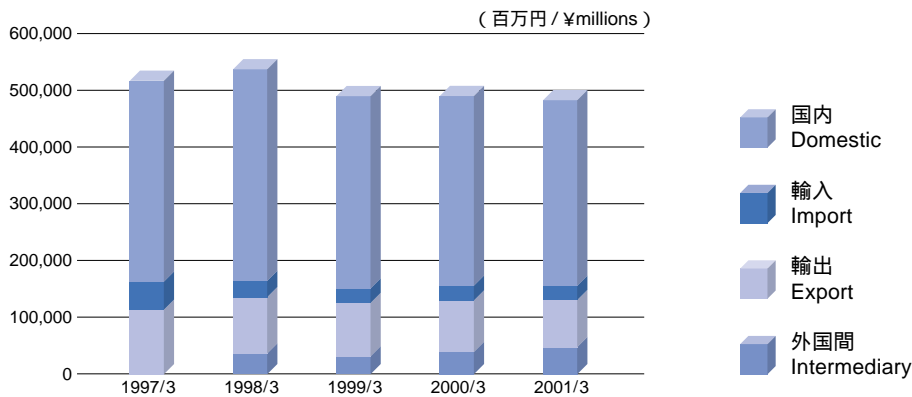
地域別売上高 Sales by Area



(百万円 / ¥millions / %)

		1997/3	1998/3	1999/3	2000/3	2001/3
国内	Japan	404,876 (78.1)	402,880 (74.8)	365,000 (74.3)	360,875 (73.7)	350,651 (72.9)
アジア	Asia	92,406 (17.8)	111,689 (20.7)	99,926 (20.4)	110,288 (22.5)	113,802 (23.6)
北米	North America	12,230 (2.4)	15,761 (2.9)	17,524 (3.6)	11,092 (2.3)	10,331 (2.1)
その他	Others	8,607 (1.7)	8,425 (1.6)	8,219 (1.7)	7,383 (1.5)	6,509 (1.4)
合計	Total	518,119 (100.0)	538,756 (100.0)	490,672 (100.0)	489,639 (100.0)	481,294 (100.0)

形態別売上高 Sales by Type of Transaction



(百万円 / ¥millions / %)

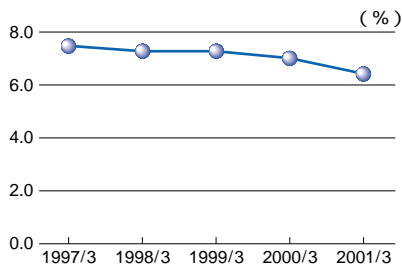
		1997/3	1998/3	1999/3	2000/3	2001/3
国内	Domestic	356,860 (68.9)	375,535 (69.7)	339,281 (69.2)	333,215 (68.1)	327,261 (68.0)
輸入	Import	48,015 (9.2)	27,344 (5.1)	25,719 (5.2)	27,659 (5.6)	23,390 (4.9)
輸出	Export	113,243 (21.9)	98,041 (18.2)	92,248 (18.8)	89,149 (18.2)	82,958 (17.2)
外国間	Intermediary	—	37,834 (7.0)	33,423 (6.8)	39,614 (8.1)	47,684 (9.9)
合計	Total	518,119 (100.0)	538,756 (100.0)	490,672 (100.0)	489,639 (100.0)	481,294 (100.0)

注)1998/3より区分を変更しております。
Note: Category was changed in 1998/3.

収益性 Profitability

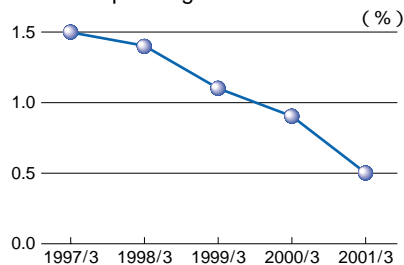
売上高総利益率

Ratio of Gross Profit to Sales



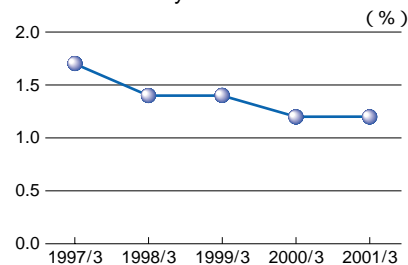
売上高営業利益率

Ratio of Operating Income to Sales



売上高経常利益率

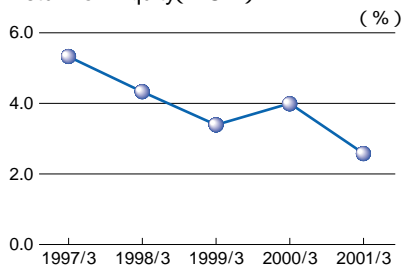
Ratio of Ordinary Income to Sales



		1997/3	1998/3	1999/3	2000/3	2001/3
売上高総利益率(%)	Ratio of Gross Profit to Sales(%)	7.5	7.3	7.3	7.0	6.4
売上高営業利益率(%)	Ratio of Operating Income to Sales(%)	1.5	1.4	1.1	0.9	0.5
売上高経常利益率(%)	Ratio of Ordinary Income to Sales(%)	1.7	1.4	1.4	1.2	1.2

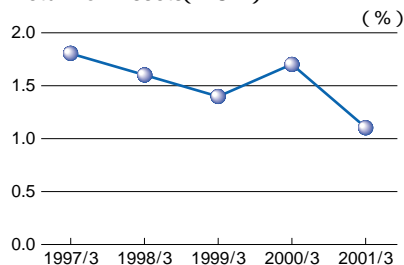
株主資本当期純利益率

Return on Equity(ROE)



総資本当期純利益率

Return on Assets(ROA)



		1997/3	1998/3	1999/3	2000/3	2001/3
株主資本当期純利益率(%)	Return on Equity(ROE)(%)	5.3	4.3	3.4	4.0	2.6
総資本当期純利益率(%)	Return on Assets(ROA)(%)	1.8	1.6	1.4	1.7	1.1

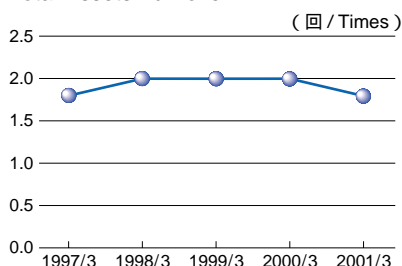
注)株主資本、総資本は期首、期末の平均値です。

Note: Values for net assets and total assets are average values at the beginning and end of the term.

効率性 Efficiency

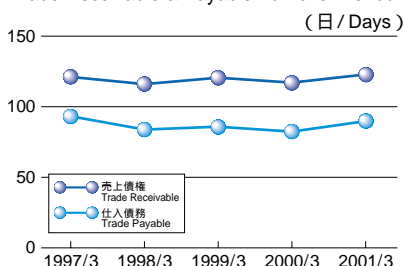
総資本回転率

Total Assets Turnover



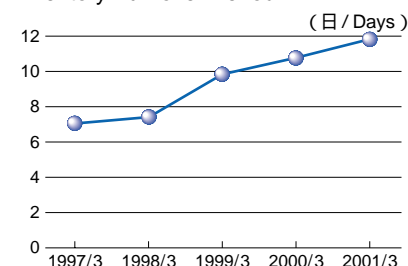
売上債権、仕入債務回転期間

Trade Receivable & Payable Turnover Period



棚卸資産回転期間

Inventory Turnover Period



		1997/3	1998/3	1999/3	2000/3	2001/3
総資本回転率(回)	Total Assets Turnover(Times)	1.8	2.0	2.0	2.0	1.8
売上債権回転期間(日)	Trade Receivable Turnover Period(Days)	123.2	116.3	120.7	117.4	123.8
仕入債務回転期間(日)	Trade Payable Turnover Period(Days)	94.0	84.5	85.9	82.8	90.1
棚卸資産回転期間(日)	Inventory Turnover Period(Days)	7.1	7.4	9.9	10.8	11.9

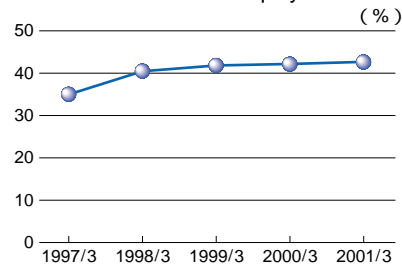
注)総資本、売上債権、仕入債務、棚卸資産は期首、期末の平均値です。

Note: Values for total assets, trade receivable, trade payable and inventory are average values at the beginning and end of the term.

安全性 Safety

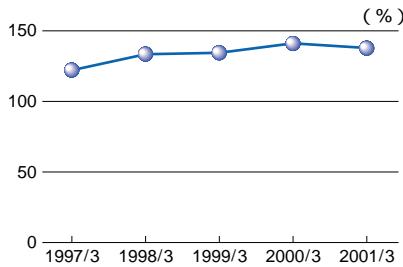
株主資本比率

Ratio of Shareholders' Equity



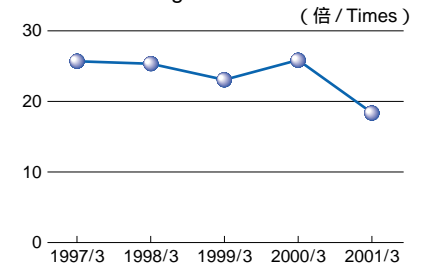
流動比率

Current Ratio



インタレスト・カバレッジ

Interest Coverage Ratio

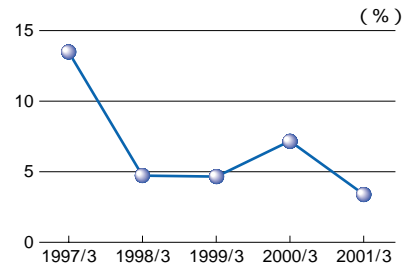


		1997/3	1998/3	1999/3	2000/3	2001/3
株主資本比率(%)	Ratio of Shareholders' Equity(%)	35.0	40.6	42.3	42.4	42.8
流動比率(%)	Current Ratio(%)	122.6	133.7	134.2	141.3	138.6
インタレスト・カバレッジ(倍)	Interest Coverage Ratio(Times)	25.7	25.5	23.1	25.8	18.2

注)インタレスト・カバレッジ=(営業利益+受取利息及び配当金)/支払利息
 Note: Interest Coverage=(Operating Income + Interest and Dividends Received)/Interest Expenses.

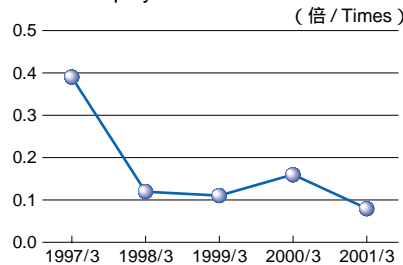
有利子負債比率

Debt to Total Assets Ratio



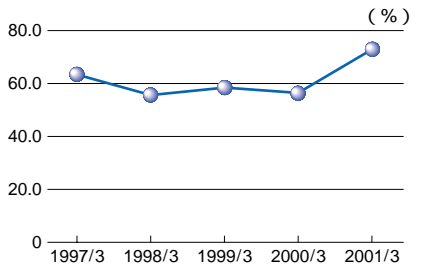
D/Eレシオ

Debt to Equity Ratio



固定比率

Fixed Assets Ratio



		1997/3	1998/3	1999/3	2000/3	2001/3
有利子負債比率(%)	Debt to Total Assets Ratio(%)	13.5	4.8	4.7	7.1	3.4
D/Eレシオ(倍)	Debt to Equity Ratio(Times)	0.39	0.12	0.11	0.17	0.08
固定比率(%)	Fixed Assets Ratio(%)	63.4	56.0	58.0	56.6	72.8

注)有利子負債比率=有利子負債/総資本
 注)D/Eレシオ=有利子負債/株主資本
 Note: Debt to Total Assets Ratio=(Loans Payable + CP + Bond)/Total Assets.
 Note: D/E Ratio=(Loans Payable + CP + Bond)/Shareholders' Equity.

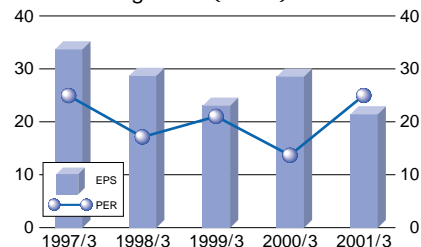
投資指標 Per Share Data

一株当たり当期純利益

Earnings per Share(EPS)

株価収益率

Price Earnings Ratio(PER)

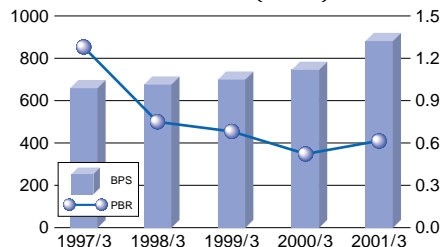


一株当たり純資産

Book Value per Share(BPS)

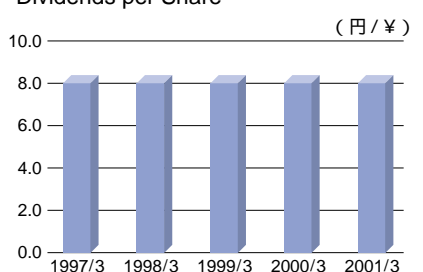
株価純資産倍率

Price Book Value Ratio(PBR)



一株当たり配当金

Dividends per Share



		1997/3	1998/3	1999/3	2000/3	2001/3
一株当たり当期純利益(円)	Earnings per Share(¥)	33.78	28.80	23.11	28.65	21.42
株価収益率(倍)	Price Earnings Ratio(Times)	24.90	17.67	20.99	13.79	24.98
一株当たり純資産(円)	Book Value per Share(¥)	654.53	674.87	698.47	748.66	877.88
株価純資産倍率(倍)	Price Book Value Ratio(Times)	1.28	0.75	0.69	0.53	0.61
一株当たり配当金(円)	Dividends per Share(¥)	8.0	8.0	8.0	8.0	8.0

貸借対照表
Balance Sheet

(百万円 / ¥millions)

	2000/3	2001/3
資産の部 Assets		
流動資産 Current assets	236,393	246,268
1.現金及び預金 Cash and time deposits	18,451	21,403
2.受取手形及び売掛金 Trade notes and accounts receivable	179,175	184,493
3.有価証券 Short-term investments	4,998	—
4.たな卸資産 Inventories	27,824	34,179
5.繰延税金資産 Deferred tax assets	1,406	1,885
6.その他 Others	5,699	5,484
貸倒引当金 Allowance for doubtful accounts	1,163	1,179
固定資産 Fixed assets	80,264	107,508
1.有形固定資産 Property and equipment	22,110	24,730
(1)建物及び構築物 Buildings and structures	(9,487)	(10,666)
(2)機械装置及び運搬具 Machinery, equipment and vehicles	(3,529)	(4,154)
(3)土地 Land	(7,074)	(7,968)
(4)その他 Others	(2,018)	(1,941)
2.無形固定資産 Intangible fixed assets	157	1,229
3.投資その他の資産 Investments and other assets	57,996	81,548
(1)投資有価証券 Investments in securities	(49,055)	(76,309)
(2)長期貸付金 Long-term loans receivable	(331)	(315)
(3)繰延税金資産 Deferred tax assets	(2,890)	(748)
(4)その他 Others	(5,882)	(4,688)
貸倒引当金 Allowance for doubtful accounts	(162)	(512)
資産合計 Total assets	316,657	353,776

	2000/3	2001/3
負債の部 Liabilities		
流動負債 Current liabilities	159,815	168,142
1.支払手形及び買掛金 Trade notes and accounts payable	123,530	134,337
2.短期借入金 Short-term loans payable	17,181	14,002
3.コマーシャルペーパー Commercial paper	3,000	—
4.未払法人税等 Accrued income taxes	1,519	4,615
5.その他 Others	14,585	15,187
固定負債 Fixed liabilities	15,609	28,252
1.社債 Bond	7,000	7,000
2.長期借入金 Long-term debt	2,500	2,876
3.繰延税金負債 Deferred tax liabilities	1	7,846
4.退職給与引当金 Reserve for employees' retirement	4,427	—
5.退職給付引当金 Reserve for employees' retirement	—	9,231
6.役員退職慰労引当金 Reserve for directors' retirement	1,163	1,261
7.その他 Others	517	36
負債合計 Total liabilities	175,424	196,395
少数株主持分 Minority interests		
少数株主持分 Minority interests	6,394	3,882
資本の部 Shareholders' equity		
資本金 Capital stock	9,699	9,699
資本準備金 Additional paid-in capital	9,634	9,634
連結剰余金 Consolidated surplus	115,503	118,336
その他有価証券評価差額金 Gain on devaluation of investments in securities	—	16,210
為替換算調整勘定 Translation adjustments	—	383
自己株式 Treasury common stock, at cost	0	0
資本合計 Total shareholders' equity	134,838	153,498
負債、少数株主持分及び資本合計 Total liabilities, minority interests and shareholders' equity	316,657	353,776

損益及び剰余金結合計算書 (百万円/¥millions)
Income Statement & Surplus Statement

	2000/3	2001/3
売上高 Net sales	568,293	559,372
売上原価 Cost of sales	513,006	504,232
売上総利益 Gross profit	55,287	55,140
販売費及び一般管理費 Selling, general and administrative expenses	47,139	47,388
営業利益 Operating income	8,147	7,752
営業外収益 Non-operating income	4,959	4,641
1. 受取利息 Interests received	(731)	(786)
2. 受取配当金 Dividends received	(1,359)	(1,172)
3. 収入賃貸料 Rent income	(606)	(544)
4. その他 Others	(2,262)	(2,137)
営業外費用 Non-operating expenses	3,221	2,111
1. 支払利息 Interest expenses	(758)	(815)
2. その他 Others	(2,463)	(1,295)
経常利益 Ordinary income	9,885	10,282
特別利益 Extraordinary gains	604	7,363
1. 固定資産売却益 Gains on disposal of property and equipment	(60)	(1,519)
2. 投資有価証券売却益 Gains on sales of investment securities	(333)	(3,971)
3. 退職給付信託設定益 Gains on transfer of investment securities to the pension plan	(—)	(1,870)
4. 前期損益修正益 Prior-term adjustment	(210)	(2)
特別損失 Extraordinary losses	152	8,293
1. 退職給付会計基準変更時差異 Provision for retirement benefits	(—)	(6,984)
2. 関係会社整理損 Loss on liquidation of subsidiaries	(—)	(281)
3. その他 Others	(152)	(1,027)
税金等調整前当期純利益 Net income before taxes	10,337	9,352
法人税、住民税及び事業税 Income taxes	3,486	6,527
法人税等調整額 Deferred taxes	143	2,506
少数株主利益 Minority interests	336	385
当期純利益 Net income	6,371	4,945
連結剰余金期首残高 Consolidated surplus at the beginning of the year	111,061	115,503
1. 連結剰余金期首残高 Consolidated surplus at the beginning of the year	(106,594)	(115,503)
2. 過年度税効果調整額 Prior-year adjustment of deferred taxes	(4,466)	(—)
連結剰余金増加高 Increase of consolidated surplus	1,417	338
1. 連結子会社合併による増加高 Increase in retained earnings by merger of subsidiaries	(—)	(338)
2. 連結会社増加に伴う剰余金増加高 Increase in retained earnings accompanying the increase in number of consolidated subsidiaries	(260)	(—)
3. 持分法適用会社増加に伴う剰余金増加高 Increase in retained earnings accompanying the increase in number of companies accounted for by the equity method	(885)	(—)
4. 合併による未処分利益受入額 Increase in unappropriated retained earnings by merger	(272)	(—)
連結剰余金減少高 Decrease of consolidated surplus	3,346	2,451
1. 配当金 Cash dividends	(1,168)	(1,132)
2. 役員賞与 Bonuses to directors	(59)	(62)
3. 自己株式消却額 Retirement of common stock	(2,117)	(1,256)
連結剰余金期末残高 Consolidated surplus at the end of the year	115,503	118,336

キャッシュ・フロー計算書 (百万円/¥millions)
Cash Flow Statement

	2000/3	2001/3
営業活動によるキャッシュ・フロー Operating activities		
税金等調整前当期純利益 Net income before taxes	10,337	9,352
減価償却費 Depreciation	2,143	2,966
退職給与引当金の減少額 Decrease in retirement benefits	874	4,690
退職給付引当金の増加額 Increase in retirement benefits	—	9,231
受取利息及び受取配当金 Interest and dividends received	2,090	1,959
有形固定資産売却損益 Gain on disposal of property and equipment	13	1,478
売上債権の増加額 Increase in notes and accounts receivable	2,657	2,341
たな卸資産の増加額 Increase in inventories	634	5,780
仕入債務の増加額 Increase in notes and accounts payable	2,929	7,118
投資有価証券売却損益 Gain on sales of investment securities	305	3,802
有価証券の評価替 Loss on devaluation of investment securities	1,448	92
その他 Others	1,556	1,928
小計 Sub total	8,728	10,636
利息及び配当金の受取額 Interest and dividends received by cash	2,373	1,985
利息の支払額 Interest paid	720	822
法人税等の支払額 Taxes paid	6,768	3,633
営業活動によるキャッシュ・フロー Net cash provided by operating activities	3,613	8,165
投資活動によるキャッシュ・フロー Investing activities		
有形固定資産の取得による支出 Purchases of property and equipment	2,929	3,593
有形固定資産の売却による収入 Proceeds from sales of property and equipment	1,272	2,045
投資有価証券の取得による支出 Purchases of investment securities	3,168	5,184
投資有価証券の売却による収入 Proceeds from sales of investment securities	1,601	6,119
連結範囲の変更を伴う子会社株式の取得による支出 Payment for subsidiary purchases of stock, net of cash acquired	—	2,895
連結範囲の変更を伴う子会社株式の売却による収入 Proceeds on subsidiary sales of stock, net of related expenses	—	211
その他 Others	615	866
投資活動によるキャッシュ・フロー Net cash provided by investing activities	2,607	4,162
財務活動によるキャッシュ・フロー Financing activities		
短期借入金の純減額 Decrease in short-term loans	3,298	6,830
長期借入による収入 Proceeds from long-term debt	—	1,185
社債の発行による収入 Proceeds from issuance of bond	7,000	—
自己株式の取得による支出 Expenditures for treasury stock	2,117	1,256
配当金の支払額 Dividends paid	1,168	1,132
その他 Others	443	273
財務活動によるキャッシュ・フロー Net cash used in financing activities	28	8,306
現金及び現金同等物に係る換算差額 Effect of exchange rate changes on cash and cash equivalents	418	1,072
現金及び現金同等物の増減額 Net increase(decrease) in cash and cash equivalents	559	3,231
現金及び現金同等物の期首残高 Cash and cash equivalents at the beginning of the year	19,734	21,015
連結子会社合併に伴う現金及び現金同等物の増加額 Increase in cash and cash equivalents by merger of subsidiaries	—	680
新規連結に伴う現金及び現金同等物の増加額 Increase in cash and cash equivalents accompanying consolidation	722	—
現金及び現金同等物の期末残高 Cash and cash equivalents at the end of the year	21,015	18,465

貸借対照表
Balance Sheet

(百万円 / ¥millions)

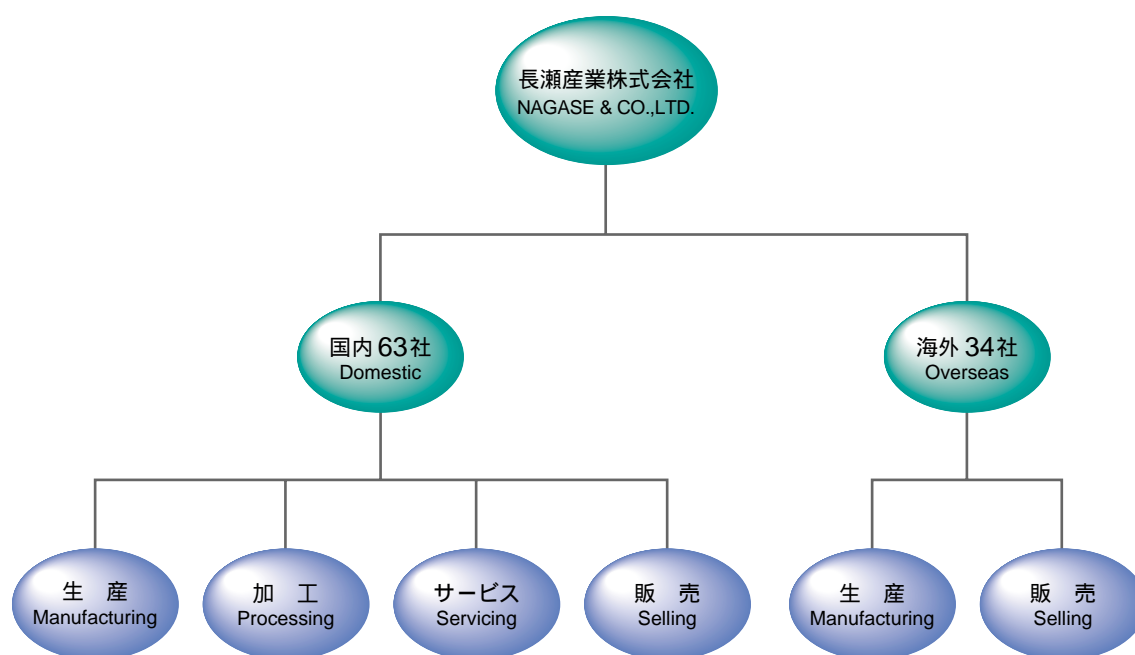
	2000/3	2001/3
資産の部 Assets		
流動資産 Current assets	190,173	195,982
1.現金及び預金 Cash and time deposits	4,682	7,055
2.受取手形 Trade notes receivable	35,297	34,536
3.売掛金 Trade accounts receivable	125,215	131,333
4.有価証券 Short-term investments	4,998	—
5.自己株式 Treasury stock	0	0
6.商品 Inventories	14,571	16,861
7.前渡金 Advance payment	41	212
8.繰延税金資産 Deferred tax assets	880	1,207
9.その他 Others	5,360	5,533
貸倒引当金 Allowance for doubtful accounts	873	758
固定資産 Fixed assets	59,926	88,789
1.有形固定資産 Property and equipment	9,360	8,525
(1)建物 Buildings	(4,460)	(4,090)
(2)構築物 Structures	(345)	(219)
(3)機械装置 Machinery and equipment	(382)	(240)
(4)車両運搬具 Vehicles	(14)	(2)
(5)工具器具備品 Tools, furniture and fixtures	(978)	(847)
(6)土地 Land	(3,178)	(3,125)
2.無形固定資産 Intangible fixed assets	77	66
3.投資その他の資産 Investments and other assets	50,488	80,198
(1)投資有価証券 Investments in securities	(37,875)	(63,210)
(2)関係会社株式 Investment in subsidiaries	(7,407)	(13,878)
(3)関係会社出資金 Other investment in subsidiaries	(34)	(130)
(4)関係会社長期貸付金 Long-term loans receivable in subsidiaries	(557)	(364)
(5)繰延税金資産 Deferred tax assets	(1,798)	—
(6)その他 Others	(2,888)	(3,072)
貸倒引当金 Allowance for doubtful accounts	(74)	(457)
資産合計 Total assets	250,099	284,772

	2000/3	2001/3
負債の部 Liabilities		
流動負債 Current liabilities	134,598	141,352
1.支払手形 Trade notes payable	5,105	5,998
2.買掛金 Trade accounts payable	107,698	118,875
3.短期借入金 Short-term loans payable	7,229	2,173
4.コマーシャルペーパー Commercial paper	3,000	—
5.未払金 Accrued payment	1,940	1,629
6.未払費用 Accrued expenses	3,322	3,006
7.未払法人税等 Accrued income taxes	380	2,927
8.前受金 Advance received	135	213
9.預り金 Deposits received	2,411	3,220
10.前受収益 Deferred income	14	20
11.その他 Others	3,359	3,284
固定負債 Fixed liabilities	9,537	21,449
1.社債 Bond	7,000	7,000
2.長期借入金 Long-term debt	500	500
3.繰延税金負債 Deferred tax liabilities	—	7,494
4.退職給与引当金 Reserve for employees' retirement	1,365	—
5.退職給付引当金 Reserve for employees' retirement	—	5,706
6.役員退職慰勞引当金 Reserve for directors' retirement	672	748
負債合計 Total liabilities	144,136	162,801
資本の部 Shareholders' equity		
資本金 Capital stock	9,699	9,699
資本準備金 Additional paid-in capital	9,634	9,634
利益準備金 Legal reserve	2,424	2,424
その他の剰余金 Retained earnings	84,203	84,769
1.特別償却準備金 Reserve for special depreciation	—	65
2.圧縮記帳積立金 Reserve for advanced depreciation	16	15
3.別途積立金 Other reserves	76,510	78,510
4.当期末処分利益 Unappropriated retained earnings	7,677	6,178
その他有価証券評価差額金 Gain on devaluation of investments in securities	—	15,441
資本合計 Total shareholders' equity	105,963	121,970
負債及び資本合計 Total liabilities and shareholders' equity	250,099	284,772

損益計算書 (百万円 / ¥millions)
Income Statement

	2000/3	2001/3
売上高 Net sales	489,639	481,294
売上原価 Cost of sales	455,142	450,491
売上総利益 Gross profit	34,496	30,803
販売費及び一般管理費 Selling, general and administrative expenses	30,137	28,522
営業利益 Operating income	4,359	2,280
営業外収益 Non-operating income	4,259	4,709
1. 受取利息 Interests received	(529)	(563)
2. 受取配当金 Dividends received	(1,970)	(2,606)
3. 収入賃借料 Rent income	(752)	(668)
4. その他 Others	(1,006)	(870)
営業外費用 Non-operating expenses	2,599	1,291
1. 支払利息 Interest expenses	(265)	(300)
2. 有価証券評価損 Loss on devaluation of investment securities	(1,420)	(238)
3. その他 Others	(913)	(752)
経常利益 Ordinary income	6,020	5,697
特別利益 Extraordinary gains	264	7,422
1. 固定資産売却益 Gains on disposal of property and equipment	(56)	(1,511)
2. 投資有価証券売却益 Gains on sales of investment securities	(35)	(4,039)
3. 退職給付信託設定益 Gains on transfer of investment securities to the pension plan	(一)	(1,870)
4. 前期損益修正益 Prior-term adjustment	(172)	(1)
特別損失 Extraordinary losses	93	8,330
1. 退職給付会計基準変更時差異 Provision for retirement benefits	(一)	(6,984)
2. 関係会社整理損 Loss on liquidation of subsidiaries	(一)	(537)
3. その他 Others	(93)	(808)
税引前当期純利益 Net income before taxes	6,190	4,790
法人税、住民税及び事業税 Income taxes	1,874	4,024
法人税等調整額 Deferred taxes	189	2,238
当期純利益 Net income	4,127	3,004

グループ会社の状況 Performance of Group Companies



連結対象会社(28社) Consolidated Companies

国内会社 Domestic

(平成13年3月末時点 / For the years ended March 31, 2001)

生産及び加工 Manufacturing and Processing

社名 Company	資本金又は出資金 Capital stock (百万円 / ¥millions)	設立時期 Foundation	議決権の所有割合 (%) Shares of having resolution	事業内容 Business lines
帝国化学産業(株) Teikoku Chemical Industries Co., Ltd.	200	1938/06	100.00	医薬品・動物用医薬品・医薬部外品・化粧品・工業薬品・樹脂・その他化学薬品の製造並びに売買及び輸出入 Manufacturing and selling, import and export of pharmaceutical, drug for animal, medical care products, cosmetics, industrial chemicals, resins and other chemicals.
ナガセテムテックス(株) Nagase ChemteX Ltd.	730	1970/04	100.00	エポキシ樹脂を原料とした熱硬化性樹脂及び関連商品の製造販売 Manufacturing and selling of thermosetting resin based on epoxy resin and its related products.
東拓工業(株) Totaku Industries, Inc.	270	1952/05	76.25	合成樹脂等をもとにした産業用、家庭用ホース、フレキシブルパイプ等の製造販売 Manufacturing and selling of plastic-based industrial and home-use hose, flexible pipe, etc.
セツナン化成(株) Setsunan Kasei Co., Ltd.	105	1966/02	100.00	合成樹脂の着色・加工 Manufacture of plastic coloring compounds.
ナガセ化成工業(株) Nagase Chemicals Ltd.	1,000	1980/10	100.00	一般化学工業製品及び中間体の製造 Manufacturing of industrial chemical products and intermediates.
ナガセ電子機器サービス(株) Nagase Electronic Equipment Service Co., Ltd.	45	1989/06	100.00	半導体機器等の販売及びメンテナンス Maintenance services for cryopumps and vacuum equipment.
ナガセ生化学工業(株) Nagase Biochemicals, Ltd.	490	1977/04	100.00	酵素製剤、食品添加物、飼料添加物の製造 Manufacture of enzymes and food and feed additives.
寿化成工業(株) Kotobuki Industries Co., Ltd.	20	1972/11	85.00 (42.50)	合成樹脂製品の成型、加工 Manufacture of plastic products.

販売及びサービス Selling and Servicing					
社名 Company	資本金又は出資金 Capital stock (百万円 / ¥millions)	設立時期 Foundation	議決権の所有割合 (%) Shares of having resolution	事業内容 Business lines	
報映産業(株) Hoei Sangyo Co., Ltd.	250	1974/04	67.40	情報や映像を記録する各種メディア及び情報や映像を記録、 圧縮、加工する各種機器とシステムの販売 Sale of various recording media for information and image and various device and system for recording, compression and processing of information & image.	
ナガセプラスチック販売(株) Nagase Plastics Co., Ltd.	96	1975/03	100.00	プラスチック包装資材及び工業品、成型品、接着品、 プラスチック原料、各種機械の販売 Sale of plastic packaging material, industrial products, molded products, adhesives, plastic raw material and other various machine, etc. .	
長瀬カラーケミカル(株) Nagase Colors & Chemicals Co., Ltd.	100	2000/04	100.00	染料、化学工業薬品などの仕入販売及び情報提供サービス Sale and information-providing service of dyestuffs, industrial chemicals.	
ナガセエレクトクス(株) Nagase Elex Co., Ltd.	20	1979/02	100.00	合成樹脂製品及びその原料の販売 Sale of plastics and plastic raw material	
デルタファインケミカル(株) Delta Fine Chemical Co., Ltd.	30	1995/09	100.00	塗料原料、染料、化成品等の販売 Sale of dyestuffs, coating intermediates, plastics, and chemicals.	
ナガセ研磨機材(株) Nagase Barrel Finishing Systems Co., Ltd.	50	1955/10	100.00	研磨材、研磨機械の販売 Sale of abrasive and inorganic materials	
ナガセ生化学品販売(株) Nagase Biochemical Sales Co., Ltd.	30	1987/04	100.00 (13.00)	酵素製剤、食品添加物および飼料添加物の販売 Sale of enzymes and food and feed additives	
ナガセ物流(株) Nagase Storage & Distribution Co., Ltd.	401	1982/04	100.00	倉庫業 Warehousing	
静岡長瀬(株) Shizuoka Nagase Co., Ltd.	30	1972/04	100.00	染料、工業薬品の販売 Sale of dyestuffs, pigments, and chemicals for paper.	

海外会社 Overseas

社名 Company	資本金又は出資金 Capital stock (千通貨 / M)	設立時期 Foundation	議決権の所有割合 (%) Shares of having resolution	事業内容 Business lines
ナガセシンガポールリミテッド Nagase Singapore(Pte)Ltd.	S\$2,700	1975/04	100.00	輸出入、仲介貿易、市場開発、情報収集 Import & export, trading, market development, information gathering.
ナガセアメリカコーポレーション Nagase America Corp.	US\$1,000	1971/04	100.00	輸出入、仲介貿易、市場開発、情報収集 Import & export, trading, market development, information gathering.
長瀬(香港)有限公司 Nagase(Hong Kong)Ltd.	HK\$3,120	1971/02	100.00	輸出入、仲介貿易、市場開発、情報収集 Import & export, trading, market development, information gathering.
ナガセヨーロッパリミテッド Nagase(Europe)Ltd.	£300	1998/03	100.00	輸出入、仲介貿易、市場開発、情報収集 Import & export, trading, market development, information gathering.
ナガセヨーロッパゲエンペーハー Nagase(Europa)GmbH	DM1,200	1980/04	100.00 (100.00)	卸売販売業 Wholesaler
ナガセタイランドリミテッド Nagase(Thailand)Co., Ltd.	BAHT87,000	1989/03	97.79 (2.21)	輸出入、仲介貿易、市場開発、情報収集 Import & export, trading, market development, information gathering.
ナガセマレーシアビーエイチディ Nagase(Malaysia)Sdn. Bhd.	M\$1,500	1981/09	51.00	輸出入、仲介貿易、市場開発、情報収集 Import & export, trading, market development, information gathering.
長華塑膠(股)有限公司 Nagase Wahlee Plastics Corp.	NT\$52,000	1990/12	60.00 (5.00)	貿易業 Trading
ナガセカリフォルニアコーポレーション Nagase California Corp.	US\$2,200	1988/06	100.00	輸出入、仲介貿易、市場開発、情報収集 Import & export, trading, market development, information gathering.
台湾長瀬(股)有限公司 Nagase(Taiwan)Co., Ltd.	NT\$45,000	1988/08	100.00	卸売販売業 Wholesaler
カナダモールドテクノロジーインコーポレーテッド Canada Mold Technology Inc.	C\$5,000	1989/03	53.00	金型製造、販売及びメンテナンス Mold making, sales and maintenance.

注)「議決権の所有割合」欄の(内書)は間接所有割合です。

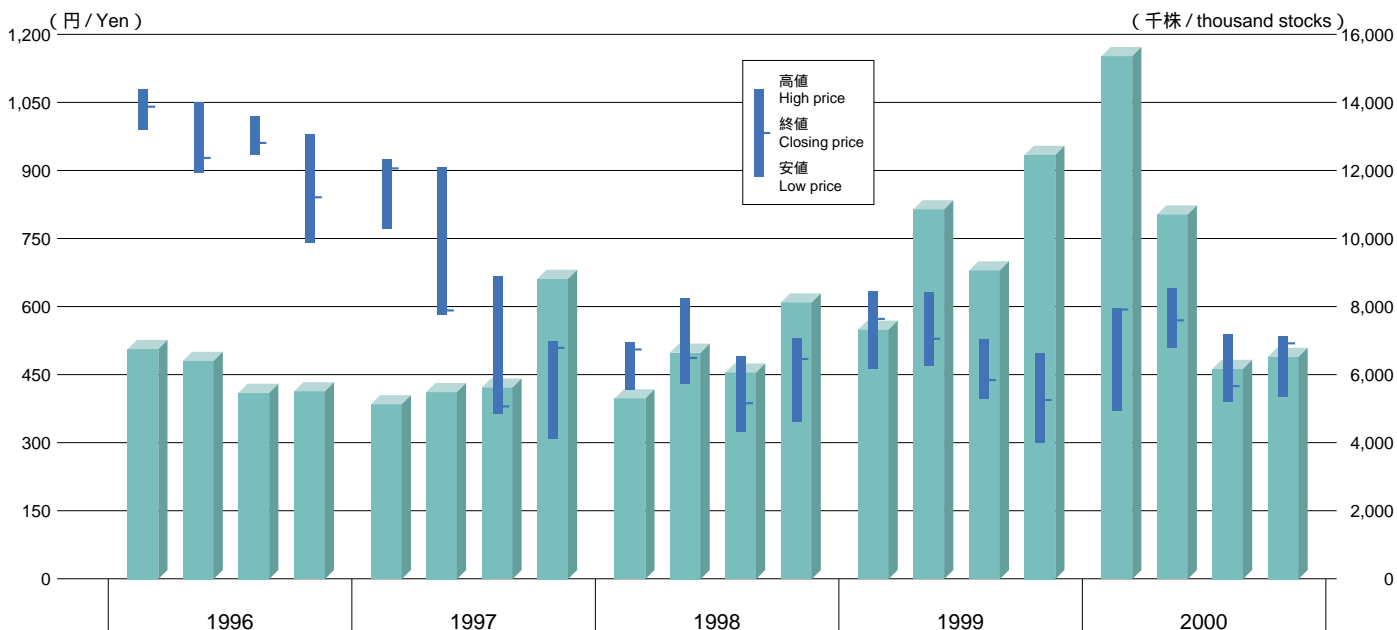
注)ナガセケムテックス(株)ナガセ化成工業(株)ナガセ生化学工業(株)及び帝国化学産業(株)は、平成13年4月にナガセケムテックス(株)を存続会社とし、合併しております。

Note: Inside of parenthesis of the box of 「shares of having resolution」 right is indirect one.

Note: Nagase ChemteX Ltd., Nagase Chemicals Ltd., Nagase Biochemicals. Ltd and Teikoku Chemical Industries Co. Ltd were merged to from Nagase ChemteX Ltd as continued company in April, 2001.

株式関連 Matters relating to stocks

株価、出来高の推移 Change of stock prices and turnover



株価 Stock prices	1996				1997				1998				1999				2000			
高値 High price	1,080	1,050	1,020	980	925	907	665	525	522	619	489	530	635	630	538	493	598	640	581	570
安値 Low price	990	897	935	740	770	580	363	308	417	430	323	345	462	470	394	352	370	508	381	401
終値 Closing price	1,040	925	961	841	907	590	380	509	506	488	387	485	575	529	419	395	598	570	425	535
出来高 Turnover	6,756	6,417	5,462	5,511	5,131	5,481	5,626	8,813	5,316	6,629	6,064	8,139	7,316	10,863	9,054	12,440	15,363	10,708	6,184	6,520

注)上記の数値は東京証券取引所の数値に基づいています。

注) Iは4～6月、IIは7～9月、IIIは10～12月、IVは1～3月の数値を表しています。

注)自己株式消却については、2001年3月末までの累計で、12,491千株(総額5,730百万円)を実施しました。

年度別としては1998年度中に5,349千株(総額2,355百万円)、1999年度中に4,542千株(総額2,117百万円)、2000年度中に2,600千株(総額1,256百万円)を消却しました。

Note: Above numeric numbers are based on the one of Tokyo Stock Exchange.

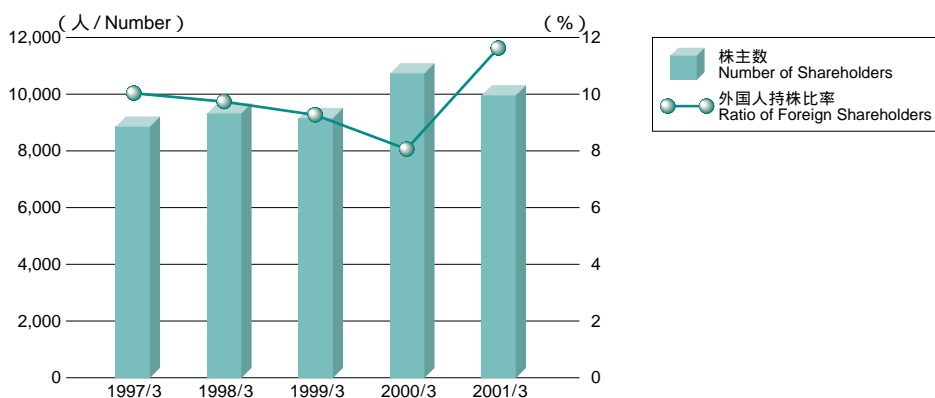
Note: I represents the figures for from April to June, II for from July to September, III for from October to December, and IV for from January to March.

Note: The erasure of treasury stocks have been executed as follows: The total figures are 12,491 thousand stocks(5,730 million yen)by the end of March in 2001.

Every FY's figure was, 5,349 thousand stocks(2,355 million yen)during FY 1998,

4,542 thousand stocks(2,117 million yen)during FY 1999, 2,600 thousand stocks(1,256 million yen)during FY 2000.

株主の推移 Change of shareholders



		1997/3	1998/3	1999/3	2000/3	2001/3
株主数(人)	Number of Shareholders	8,827	9,329	9,210	10,742	9,997
外国人持株比率(%)	Ratio of Foreign Shareholders(%)	10.09	9.75	9.28	8.05	11.66

会社概要

長瀬産業株式会社

本社
〒550-8668 大阪市西区新町一丁目1番17号
〒103-8355 東京都中央区日本橋小舟町5番1号

設立
1917年12月

問合せ先
総務部
電話(03)3665-3028 FAX(03)3665-3030
URL <http://www.nagase.co.jp>

株式名義書換代理人
住友信託銀行株式会社
東京都千代田区丸の内一丁目4番4号

株式の上場
東京証券取引所及び大阪証券取引所第一部上場(1970年8月)

株式の状況
会社が発行する株式の総数 347,509,000株
発行済株式の総数 138,937,285株

株主数 9,997名
(2001年3月31日現在)

大株主

株主名	当社への出資状況		当社の大株主への出資状況	
	持株数	持株比率	持株数	持株比率
	千株	%	千株	%
株式会社 住友銀行	6,424	4.62	6,770	0.22
住友信託銀行株式会社	5,841	4.20	4,060	0.28
株式会社 東京三菱銀行	5,651	4.07	5,230	0.11
株式会社 東海銀行	4,603	3.31	5,041	0.22
日本生命保険相互会社	4,228	3.04		
長瀬 洋	4,121	2.97		
株式会社 富士銀行	4,068	2.93		

所有者株式分布状況

証券会社	35名	498千株 (0.36%)
外国法人等	64名	16,202千株 (11.66%)
その他法人	342名	24,103千株 (17.35%)
個人その他	9,471名	42,204千株 (30.38%)
金融機関	85名	55,928千株 (40.25%)

会計監査人
監査法人 太田昭和センチュリー

Company profile

Nagase & Co., Ltd.

Head office
〒550-8668 1-17, Shinmachi 1-Chome Nishi-ku, Osaka
〒103-8355 5-1, Kobunacho Nihonbashi Chuo-ku, Tokyo

Foundation
December, 1917

Contact to
General Affairs Department
Tel(03)3665-3028 Fax(03)3665-3030
URL: <http://www.nagase.co.jp>

Share transfer agent
Sumitomo Trust & Banking Co., Ltd.
4-4, Marunouchi 1-Chome, Chiyoda-ku, Tokyo

Stock listed
Listed at the first section of Tokyo and
Osaka Stock Exchange(since August, 1970)

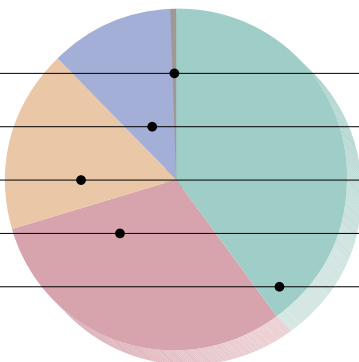
Stock status
Number of shares to be issued by the company : 347,509,000
Number of issued shares : 138,937,285

Number of shareholders 9,997
(as of March 31, 2001)

Major shareholders

Name	Investment to our company		To our Major shareholders	
	No of shares held	Special rate	No of shares held	Special rate
	M shares	%	M shares	%
Sumitomo Bank	6,424	4.62	6,770	0.22
Sumitomo Trust Bank	5,841	4.20	4,060	0.28
Tokyo Mitsubishi Bank	5,651	4.07	5,230	0.11
Tokai Bank	4,603	3.31	5,041	0.22
Nippon Life Ins. Co.	4,228	3.04		
Hiroshi Nagase	4,121	2.97		
Fuji Bank	4,107	2.93		

Status of proprietary stock distribution



Securities companies:	35	498 thousand stocks(0.36%)
Foreign corporation, etc:	64	16,202 thousand stocks(11.66%)
Other corporation:	342	24,103 thousand stocks(17.35%)
Private and others:	9,471	42,204 thousand stocks(30.38%)
Financial institutions:	85	55,928 thousand stocks(40.25%)

CPA
Century Ota Showa & Co.