

FACT BOOK

2000/3

長瀬産業株式会社
NAGASE & CO.,LTD.

主要財務指標 Summary of Financial Data

単体 Non-Consolidated

(百万円 / ¥millions)

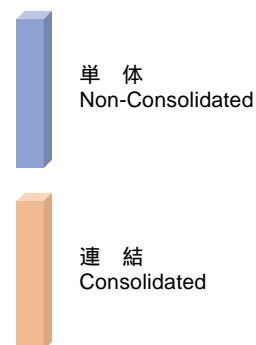
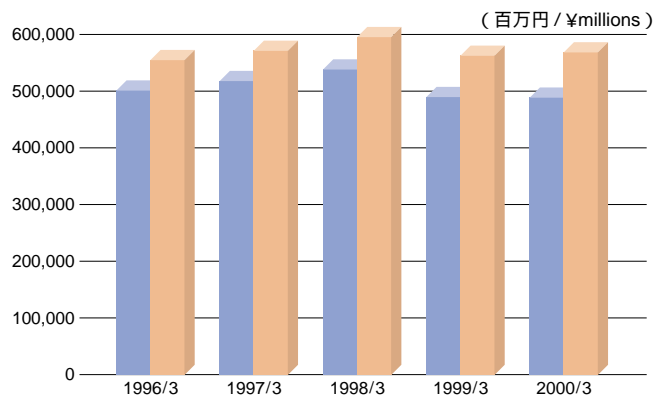
		1996/3	1997/3	1998/3	1999/3	2000/3
売上高	Sales	501,464	518,119	538,756	490,672	489,639
売上総利益	Gross Profit	38,660	39,052	39,203	35,815	34,496
営業利益	Operating Income	6,620	7,733	7,349	5,392	4,359
経常利益	Ordinary Income	9,112	8,894	7,578	6,753	6,020
当期純利益	Net Income	5,320	5,115	4,360	3,464	4,127
総資産額	Total Assets	295,565	283,223	252,001	241,229	250,099
純資産額	Net Assets	95,280	99,114	102,193	102,031	105,963
発行済株式数(千株)	Number of Shares Outstanding(Thousands of Shares)	151,428	151,428	151,428	146,079	141,537
一株当たり純資産(円)	Book Value per Share(¥)	629.21	654.53	674.87	698.47	748.66
一株当たり当期純利益(円)	Earnings per Share(¥)	35.14	33.78	28.80	23.11	28.65

連結 Consolidated

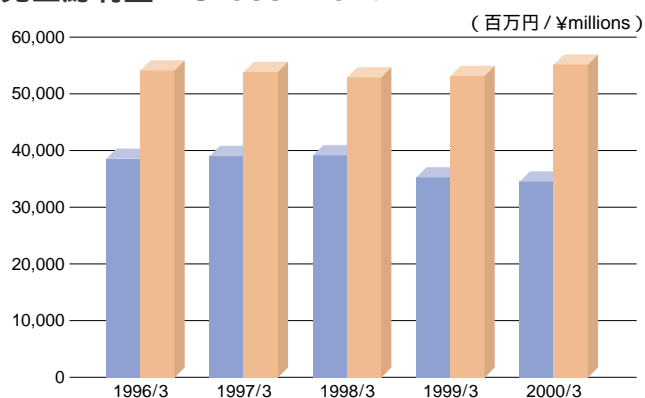
(百万円 / ¥millions)

		1996/3	1997/3	1998/3	1999/3	2000/3
売上高	Sales	555,891	571,947	596,127	563,222	568,293
売上総利益	Gross Profit	54,089	53,930	52,844	53,214	55,287
営業利益	Operating Income	8,097	8,468	8,208	7,791	8,147
経常利益	Ordinary Income	9,980	9,797	8,588	8,501	9,885
当期純利益	Net Income	5,665	5,688	4,905	3,560	6,371
総資産額	Total Assets	345,895	330,686	300,781	298,524	316,657
純資産額	Net Assets	114,514	118,914	122,530	125,929	134,838
一株当たり純資産(円)	Book Value per Share(¥)	756.23	785.29	809.17	862.06	952.67
一株当たり当期純利益(円)	Earnings per Share(¥)	37.41	37.57	32.39	23.76	44.25

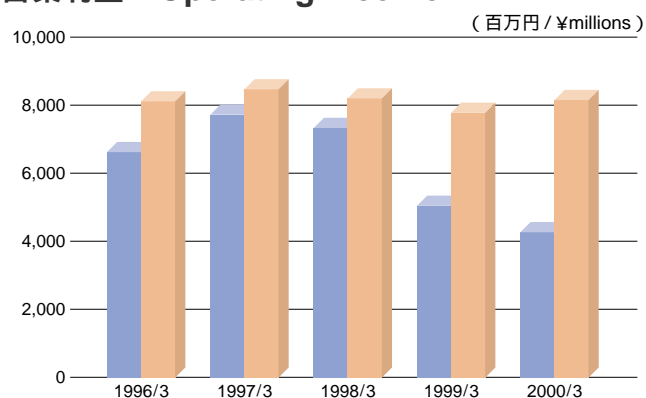
売上高 Sales



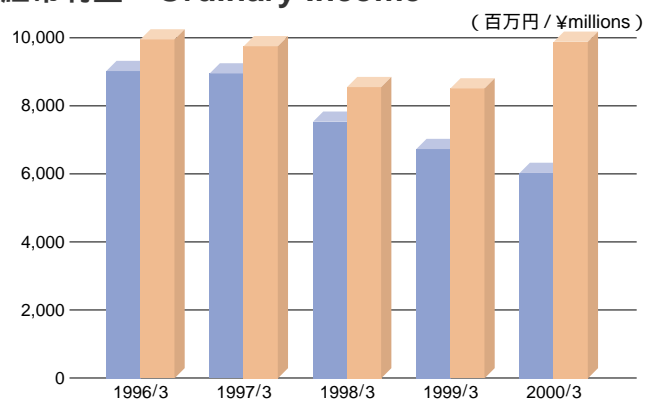
売上総利益 Gross Profit



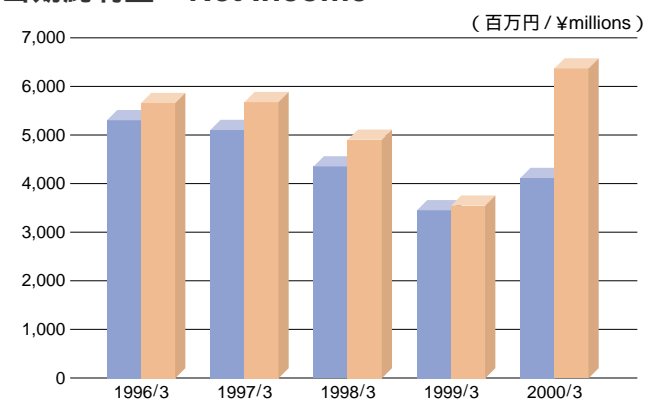
営業利益 Operating Income



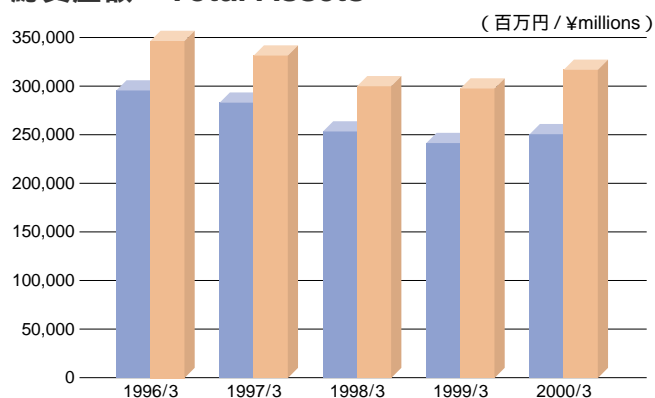
経常利益 Ordinary Income



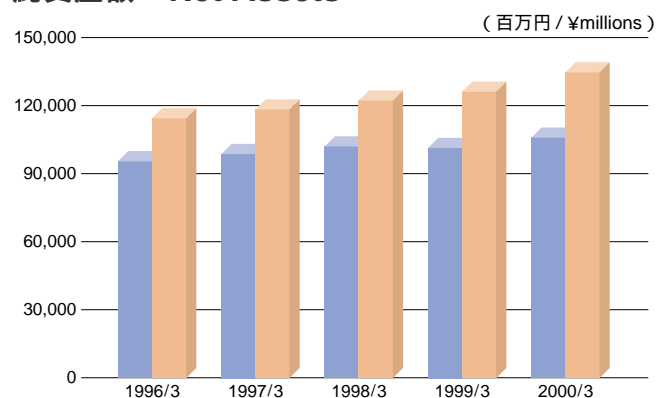
当期純利益 Net Income



総資産額 Total Assets

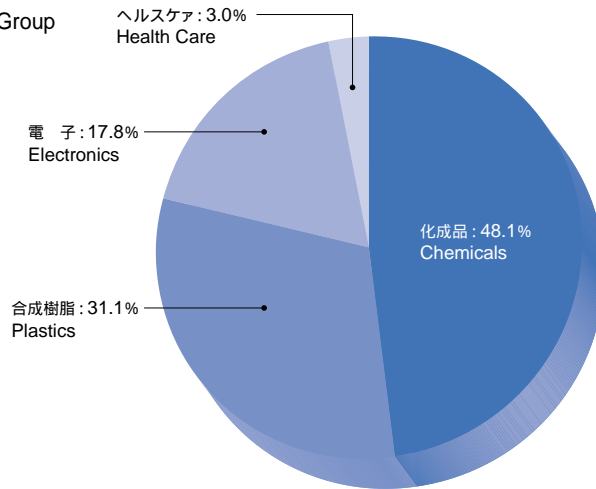


純資産額 Net Assets

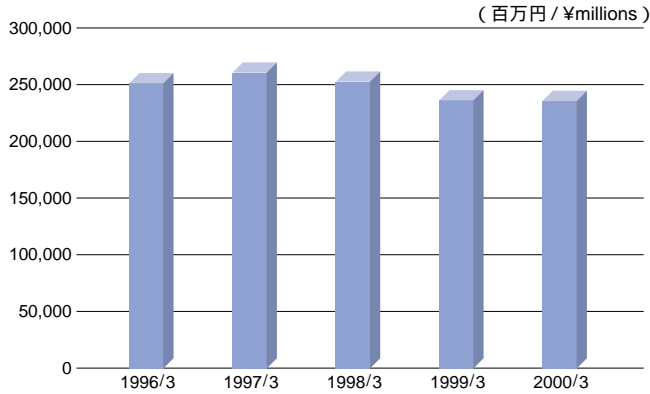


事業別売上高 Sales by Business Group

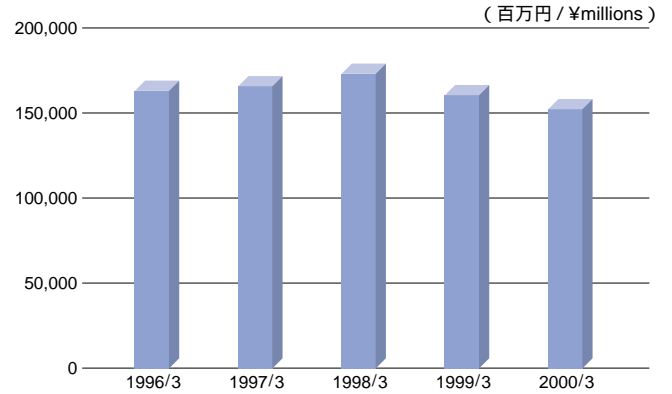
売上高の構成比 (2000/3)
Sales Composition by Business Group



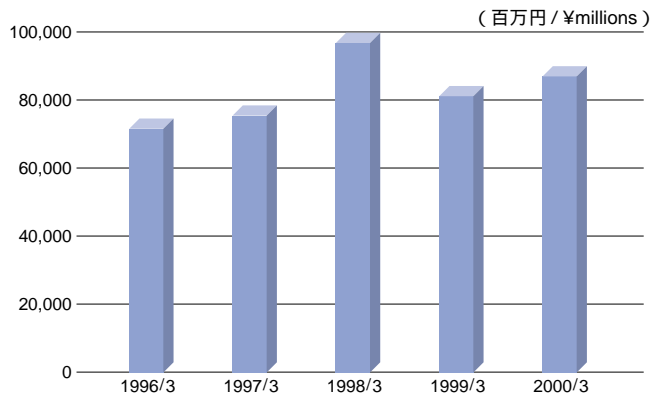
化成品 Chemicals



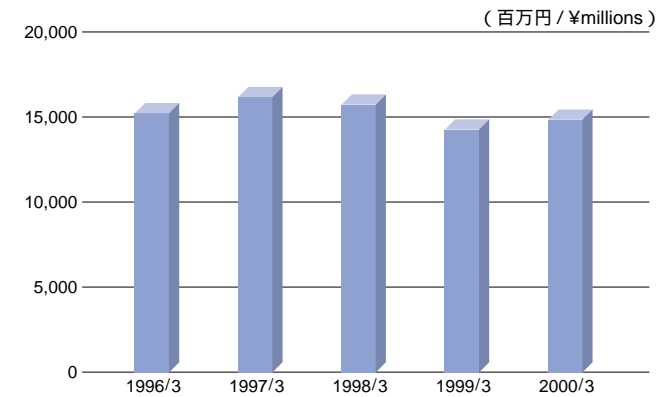
合成樹脂 Plastics



電子 Electronics



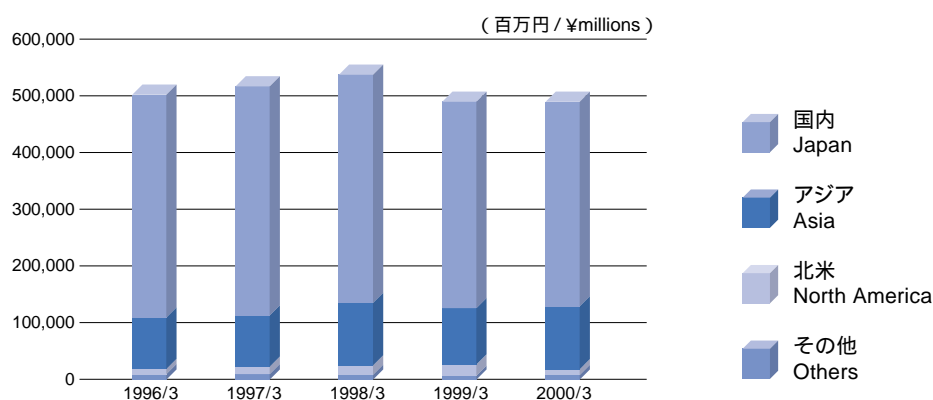
ヘルスケア Health Care



(百万円 / ¥millions / %)

		1996/3	1997/3	1998/3	1999/3	2000/3
化成品	Chemicals	251,460 (50.1)	260,348 (50.3)	252,610 (46.9)	235,277 (47.9)	235,381 (48.1)
合成樹脂	Plastics	163,296 (32.6)	166,160 (32.1)	173,791 (32.3)	160,341 (32.7)	152,069 (31.1)
電子	Electronics	71,508 (14.3)	75,452 (14.5)	96,604 (17.9)	80,770 (16.5)	87,296 (17.8)
ヘルスケア	Health Care	15,198 (3.0)	16,158 (3.1)	15,749 (2.9)	14,283 (2.9)	14,891 (3.0)
合計	Total	501,464 (100.0)	518,119 (100.0)	538,756 (100.0)	490,672 (100.0)	489,639 (100.0)

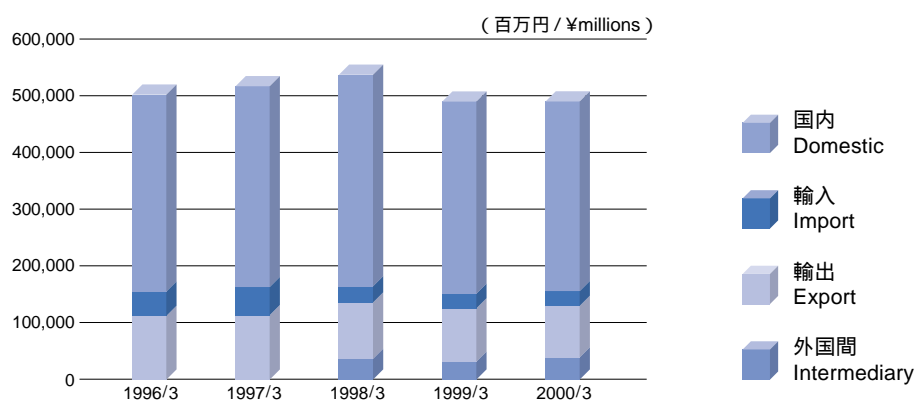
地域別売上高 Sales by Area



(百万円 / ¥millions / %)

		1996/3	1997/3	1998/3	1999/3	2000/3
国内	Japan	392,099 (78.2)	404,876 (78.1)	402,880 (74.8)	365,000 (74.3)	360,875 (73.7)
アジア	Asia	91,866 (18.3)	92,406 (17.8)	111,689 (20.7)	99,926 (20.4)	110,288 (22.5)
北米	North America	8,859 (1.8)	12,230 (2.4)	15,761 (2.9)	17,524 (3.6)	11,092 (2.3)
その他	Others	8,639 (1.7)	8,607 (1.7)	8,425 (1.6)	8,219 (1.7)	7,383 (1.5)
合計	Total	501,464 (100.0)	518,119 (100.0)	538,756 (100.0)	490,672 (100.0)	489,639 (100.0)

形態別売上高 Sales by Type of Transaction



(百万円 / ¥millions / %)

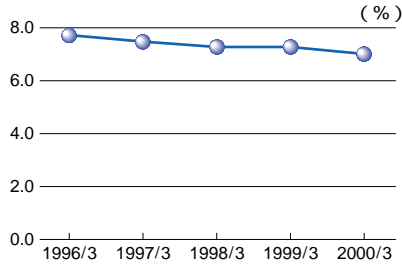
		1996/3	1997/3	1998/3	1999/3	2000/3
国内	Domestic	346,706 (69.1)	356,860 (68.9)	375,535 (69.7)	339,281 (69.2)	333,215 (68.1)
輸入	Import	45,392 (9.1)	48,015 (9.2)	27,344 (5.1)	25,719 (5.2)	27,659 (5.6)
輸出	Export	109,364 (21.8)	113,243 (21.9)	98,041 (18.2)	92,248 (18.8)	89,149 (18.2)
外国間	Intermediary	—	—	37,834 (7.0)	33,423 (6.8)	39,614 (8.1)
合計	Total	501,464 (100.0)	518,119 (100.0)	538,756 (100.0)	490,672 (100.0)	489,639 (100.0)

注) 1998/3より区分を変更しております。
Note: Category was changed in 1998/3.

収益性 Profitability

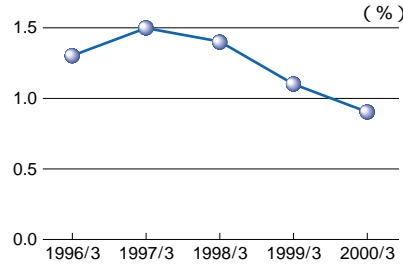
売上高総利益率

Ratio of Gross Profit to Sales



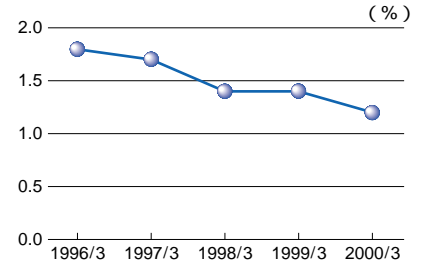
売上高営業利益率

Ratio of Operating Income to Sales



売上高経常利益率

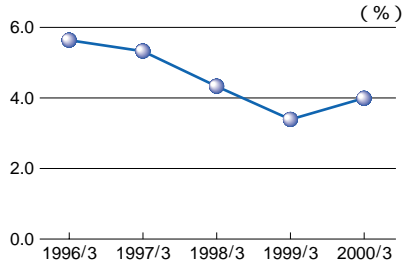
Ratio of Ordinary Income to Sales



		1996/3	1997/3	1998/3	1999/3	2000/3
売上高総利益率(%)	Ratio of Gross Profit to Sales(%)	7.7	7.5	7.3	7.3	7.0
売上高営業利益率(%)	Ratio of Operating Income to Sales(%)	1.3	1.5	1.4	1.1	0.9
売上高経常利益率(%)	Ratio of Ordinary Income to Sales(%)	1.8	1.7	1.4	1.4	1.2

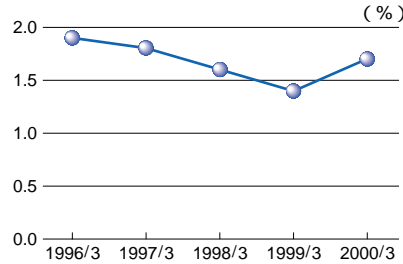
株主資本当期純利益率

Return on Equity(ROE)



総資本当期純利益率

Return on Assets(ROA)

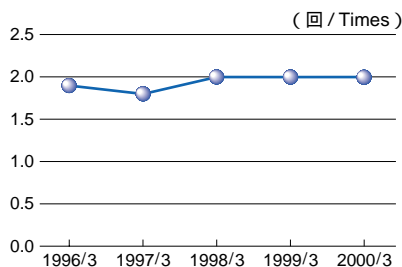


		1996/3	1997/3	1998/3	1999/3	2000/3
株主資本当期純利益率(%)	Return on Equity(ROE)(%)	5.7	5.3	4.3	3.4	4.0
総資本当期純利益率(%)	Return on Assets(ROA)(%)	1.9	1.8	1.6	1.4	1.7

効率性 Efficiency

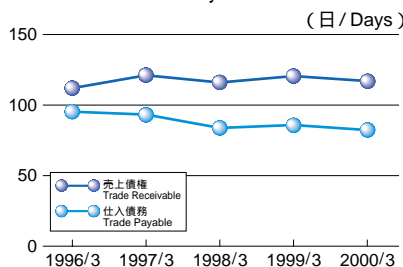
総資本回転率

Total Assets Turnover



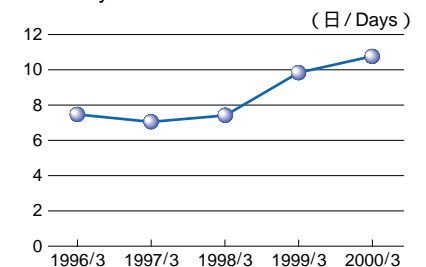
売上債権、仕入債務回転期間

Trade Receivable & Payable Turnover Period



棚卸資産回転期間

Inventory Turnover Period



		1996/3	1997/3	1998/3	1999/3	2000/3
総資本回転率(回)	Total Assets Turnover(Times)	1.9	1.8	2.0	2.0	2.0
売上債権回転期間(日)	Trade Receivable Turnover Period(Days)	112.5	123.2	116.3	120.7	117.4
仕入債務回転期間(日)	Trade Payable Turnover Period(Days)	95.3	94.0	84.5	85.9	82.8
棚卸資産回転期間(日)	Inventory Turnover Period(Days)	7.5	7.1	7.4	9.9	10.8

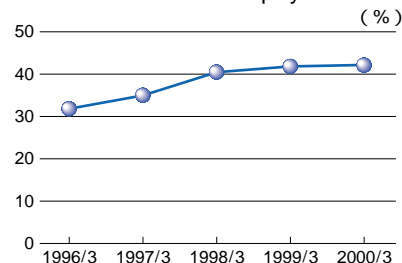
注)総資本、売上債権、仕入債務、棚卸資産は期首、期末の平均値です。

Note: Values for total assets, trade receivable, trade payable and inventory are average values at the beginning and end of the term.

安全性 Safety

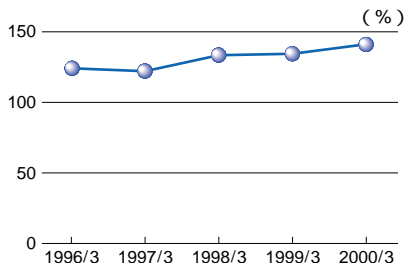
株主資本比率

Ratio of Shareholders' Equity



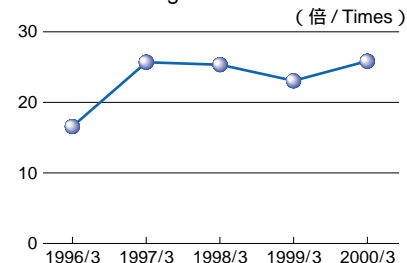
流動比率

Current Ratio



インタレスト・カバレッジ

Interest Coverage Ratio

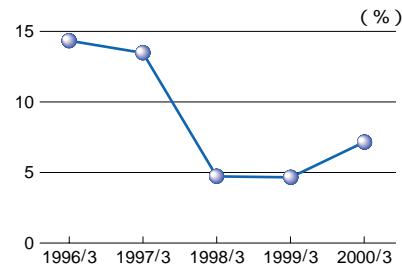


		1996/3	1997/3	1998/3	1999/3	2000/3
株主資本比率(%)	Ratio of Shareholders' Equity(%)	32.2	35.0	40.6	42.3	42.4
流動比率(%)	Current Ratio(%)	124.5	122.6	133.7	134.2	141.3
インタレスト・カバレッジ(倍)	Interest Coverage Ratio(Times)	16.6	25.7	25.5	23.1	25.8

注)インタレスト・カバレッジ=(営業利益+受取利息及び配当金)/支払利息
 Note: Interest Coverage=(Operating Income + Interest and Dividends Received)/Interest Expenses.

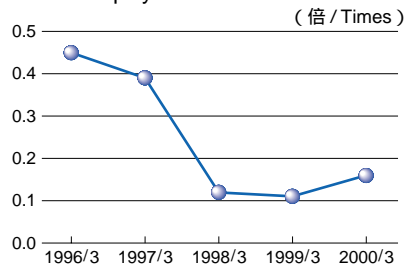
有利子負債比率

Debt to Total Assets Ratio



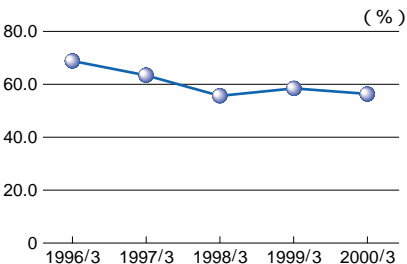
D/Eレシオ

Debt to Equity Ratio



固定比率

Fixed Assets Ratio



		1996/3	1997/3	1998/3	1999/3	2000/3
有利子負債比率(%)	Debt to Total Assets Ratio(%)	14.4	13.5	4.8	4.7	7.1
D/Eレシオ(倍)	Debt to Equity Ratio(Times)	0.45	0.39	0.12	0.11	0.17
固定比率(%)	Fixed Assets Ratio(%)	68.5	63.4	56.0	58.0	56.6

注)有利子負債比率=有利子負債/総資本
 注)D/Eレシオ=有利子負債/株主資本
 Note: Debt to Total Assets Ratio=(Loans Payable + CP + Bond)/Total Assets.
 Note: D/E Ratio=(Loans Payable + CP + Bond)/Shareholders' Equity.

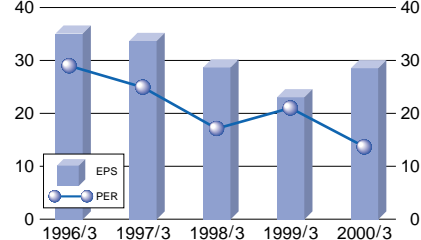
投資指標 Per Share Data

一株当たり当期純利益

Earnings per Share(EPS)

株価収益率

Price Earnings Ratio(PER)

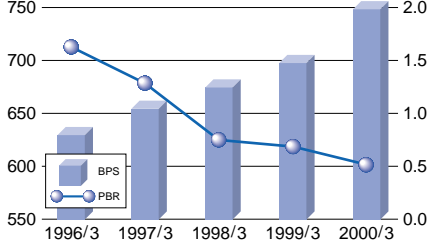


一株当たり純資産

Book Value per Share(BPS)

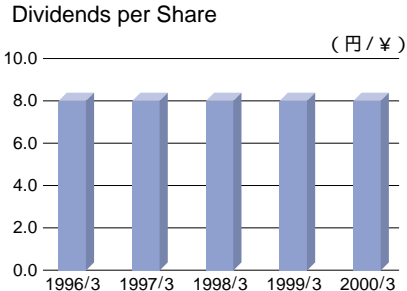
株価純資産倍率

Price Book Value Ratio(PBR)



一株当たり配当金

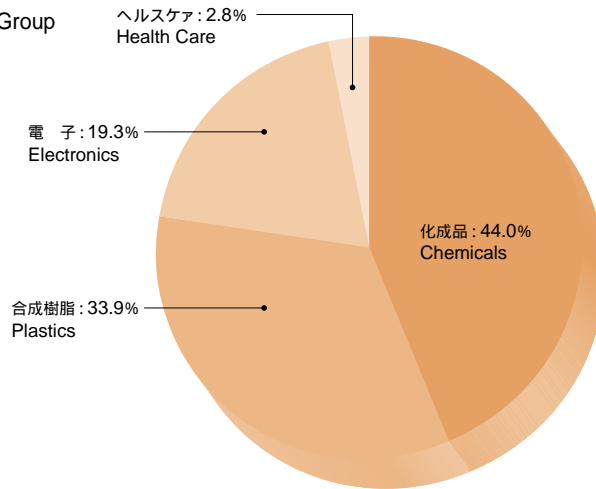
Dividends per Share



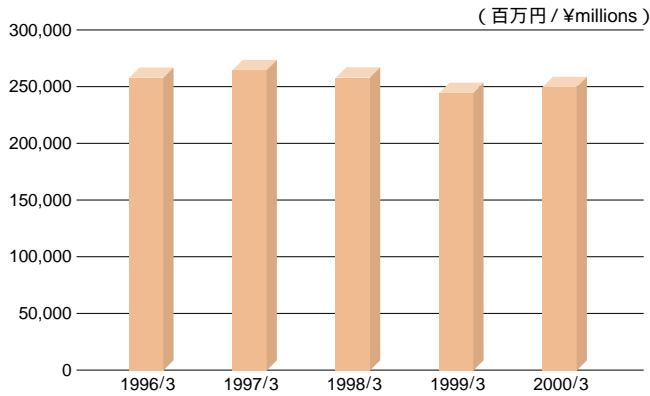
		1996/3	1997/3	1998/3	1999/3	2000/3
一株当たり当期純利益(円)	Earnings per Share(¥)	35.14	33.78	28.80	23.11	28.65
株価収益率(倍)	Price Earnings Ratio(Times)	29.03	24.90	17.68	20.99	13.79
一株当たり純資産(円)	Book Value per Share(¥)	629.21	654.53	674.87	698.47	748.66
株価純資産倍率(倍)	Price Book Value Ratio(Times)	1.62	1.28	0.75	0.69	0.53
一株当たり配当金(円)	Dividends per Share(¥)	8.0	8.0	8.0	8.0	8.0

事業別売上高 Sales by Business Group

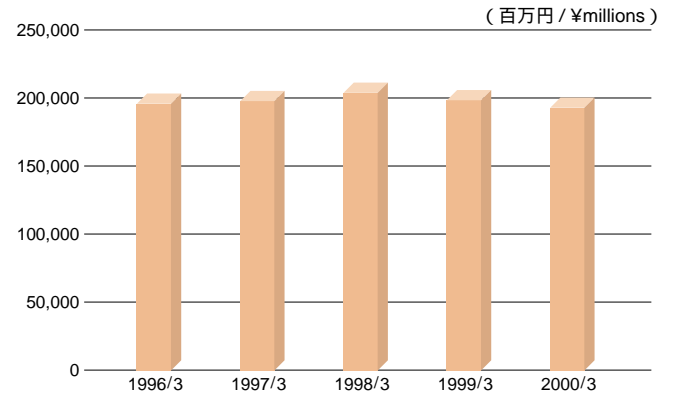
売上高の構成比 (2000/3)
Sales Composition by Business Group



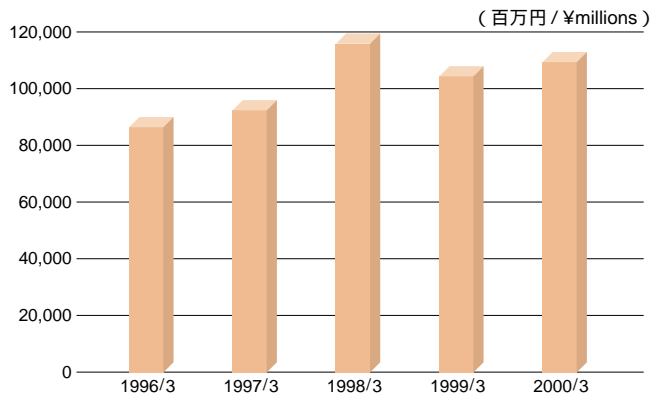
化成品 Chemicals



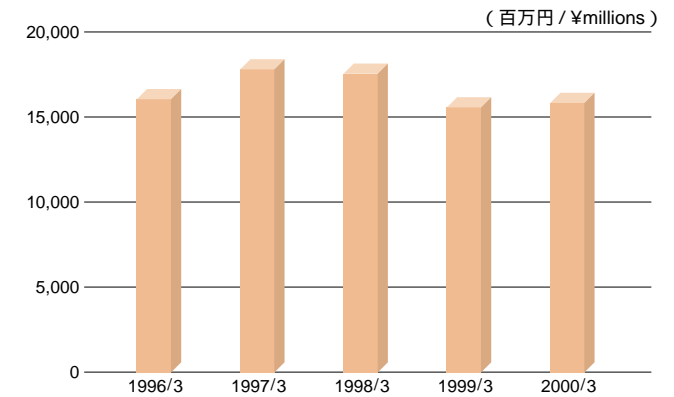
合成樹脂 Plastics



電子 Electronics



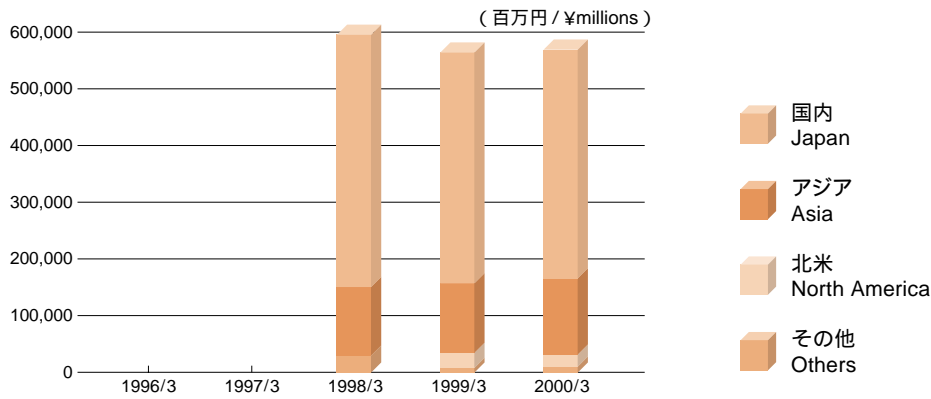
ヘルスケア Health Care



(百万円 / ¥millions / %)

		1996/3	1997/3	1998/3	1999/3	2000/3
化成品	Chemicals	258,235 (46.5)	264,205 (46.2)	258,293 (43.3)	244,067 (43.3)	249,977 (44.0)
合成樹脂	Plastics	195,312 (35.1)	197,401 (34.5)	204,718 (34.3)	199,188 (35.4)	192,710 (33.9)
電子	Electronics	86,286 (15.5)	92,464 (16.2)	115,555 (19.4)	104,454 (18.5)	109,770 (19.3)
ヘルスケア	Health Care	16,057 (2.9)	17,877 (3.1)	17,560 (3.0)	15,510 (2.8)	15,835 (2.8)
合計	Total	555,891 (100.0)	571,947 (100.0)	596,127 (100.0)	563,222 (100.0)	568,293 (100.0)

地域別売上高 Sales by Area

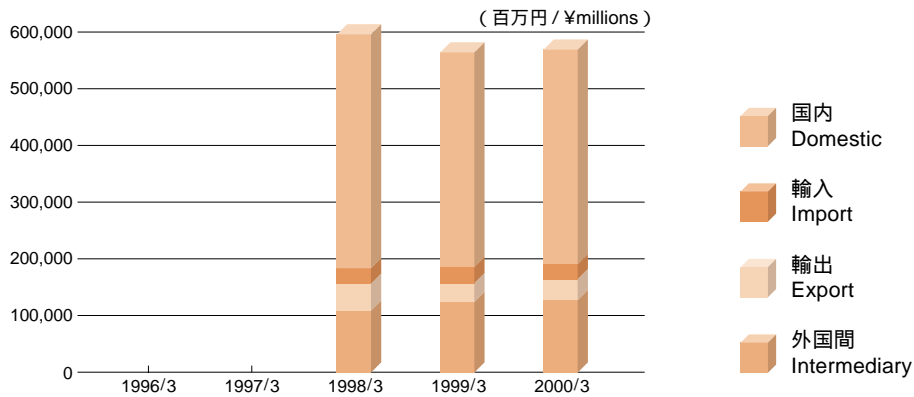


(百万円 / ¥millions / %)

	1996/3	1997/3	1998/3	1999/3	2000/3
国内 Japan			441,114 (74.0)	405,579 (72.0)	404,155 (71.1)
アジア Asia			126,334 (21.2)	123,534 (21.9)	133,047 (23.4)
北米 North America			—	25,483 (4.5)	21,296 (3.8)
その他 Others			28,679 (4.8)	8,625 (1.6)	9,794 (1.7)
合計 Total			596,127 (100.0)	563,222 (100.0)	568,293 (100.0)

注)1998/3の北米はその他に含まれています。
 Note: Others include North America in 1998/3.

形態別売上高 Sales by Type of Transaction



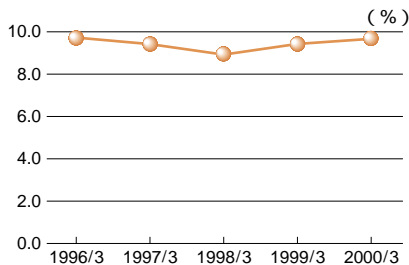
(百万円 / ¥millions / %)

	1996/3	1997/3	1998/3	1999/3	2000/3
国内 Domestic			413,285 (69.3)	379,279 (67.3)	375,895 (66.1)
輸入 Import			27,828 (4.7)	26,299 (4.7)	28,260 (5.0)
輸出 Export			46,796 (7.8)	32,395 (5.8)	36,478 (6.4)
外国間 Intermediary			108,217 (18.2)	125,247 (22.2)	127,659 (22.5)
合計 Total			596,127 (100.0)	563,222 (100.0)	568,293 (100.0)

収益性 Profitability

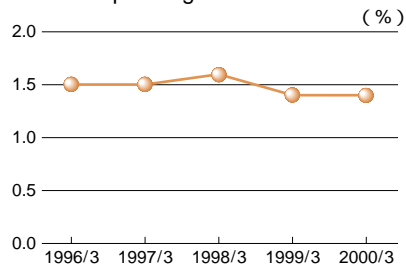
売上高総利益率

Ratio of Gross Profit to Sales



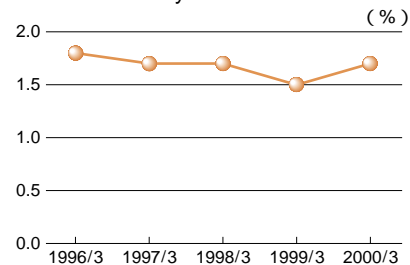
売上高営業利益率

Ratio of Operating Income to Sales



売上高経常利益率

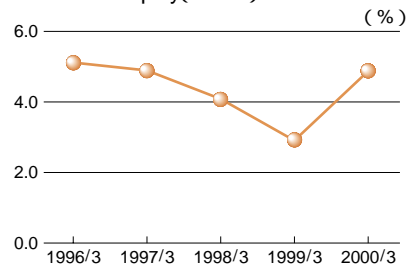
Ratio of Ordinary Income to Sales



		1996/3	1997/3	1998/3	1999/3	2000/3
売上高総利益率(%)	Ratio of Gross Profit to Sales(%)	9.7	9.4	8.9	9.4	9.7
売上高営業利益率(%)	Ratio of Operating Income to Sales(%)	1.5	1.5	1.6	1.4	1.4
売上高経常利益率(%)	Ratio of Ordinary Income to Sales(%)	1.8	1.7	1.7	1.5	1.7

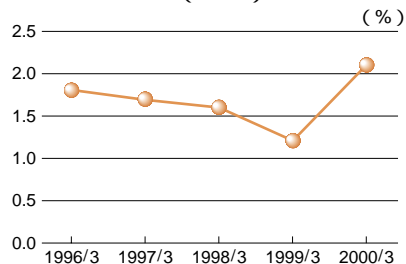
株主資本当期純利益率

Return on Equity(ROE)



総資本当期純利益率

Return on Assets(ROA)

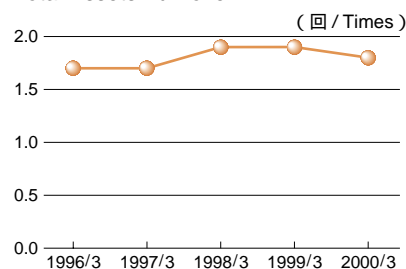


		1996/3	1997/3	1998/3	1999/3	2000/3
株主資本当期純利益率(%)	Return on Equity(ROE)(%)	5.1	4.9	4.1	2.9	4.9
総資本当期純利益率(%)	Return on Assets(ROA)(%)	1.8	1.7	1.6	1.2	2.1

効率性 Efficiency

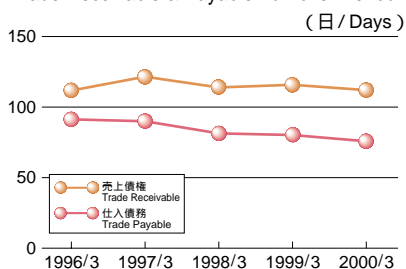
総資本回転率

Total Assets Turnover



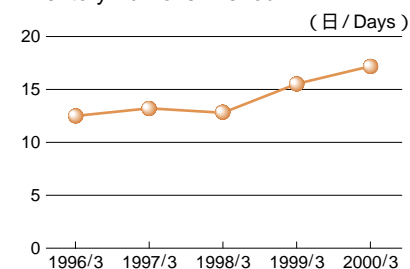
売上債権、仕入債務回転期間

Trade Receivable & Payable Turnover Period



棚卸資産回転期間

Inventory Turnover Period



		1996/3	1997/3	1998/3	1999/3	2000/3
総資本回転率(回)	Total Assets Turnover(Times)	1.7	1.7	1.9	1.9	1.8
売上債権回転期間(日)	Trade Receivable Turnover Period(Days)	111.8	120.6	114.5	116.2	112.9
仕入債務回転期間(日)	Trade Payable Turnover Period(Days)	91.9	90.4	81.0	80.1	77.6
棚卸資産回転期間(日)	Inventory Turnover Period(Days)	12.5	13.2	12.8	15.6	17.1

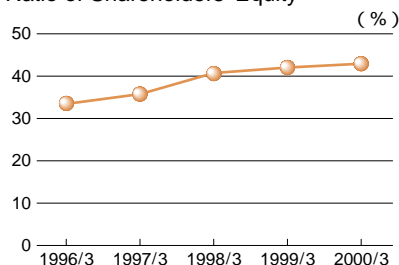
注)総資本、売上債権、仕入債務、棚卸資産は期首、期末の平均値です。

Note: Values for total assets, trade receivable, trade payable and inventory are average values at the beginning and end of the term.

安全性 Safety

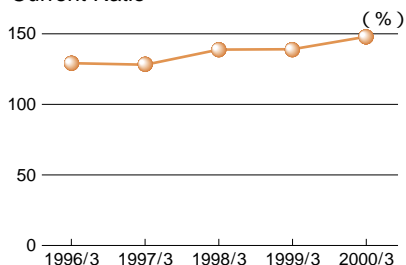
株主資本比率

Ratio of Shareholders' Equity



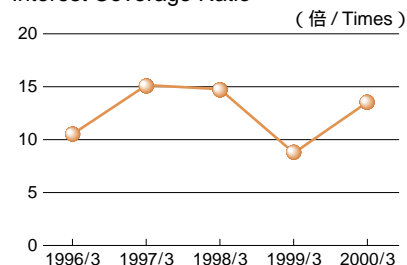
流動比率

Current Ratio



インタレスト・カバレッジ

Interest Coverage Ratio

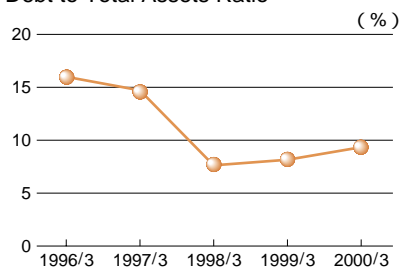


		1996/3	1997/3	1998/3	1999/3	2000/3
株主資本比率(%)	Ratio of Shareholders' Equity(%)	33.1	36.0	40.7	42.2	42.6
流動比率(%)	Current Ratio(%)	129.1	128.1	139.5	139.7	147.9
インタレスト・カバレッジ(倍)	Interest Coverage Ratio(Times)	10.5	15.1	14.8	8.9	13.5

注)インタレスト・カバレッジ=(営業利益+受取利息及び配当金)/支払利息
 Note: Interest Coverage=(Operating Income + Interest and Dividends Received)/Interest Expenses.

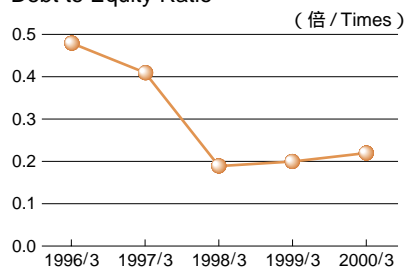
有利子負債比率

Debt to Total Assets Ratio



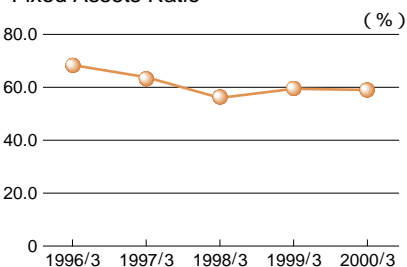
D/Eレシオ

Debt to Equity Ratio



固定比率

Fixed Assets Ratio



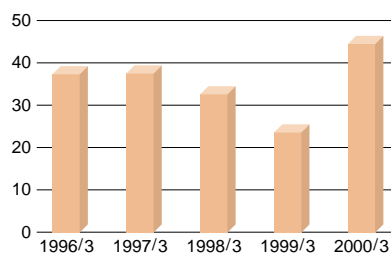
		1996/3	1997/3	1998/3	1999/3	2000/3
有利子負債比率(%)	Debt to Total Assets Ratio(%)	16.0	14.6	7.8	8.3	9.4
D/Eレシオ(倍)	Debt to Equity Ratio(Times)	0.48	0.41	0.19	0.20	0.22
固定比率(%)	Fixed Assets Ratio(%)	67.9	63.5	57.2	59.7	59.5

注)有利子負債比率=有利子負債/総資本
 注)D/Eレシオ=有利子負債/株主資本
 Note: Debt to Total Assets Ratio=(Loans Payable + CP + Bond)/Total Assets.
 Note: D/E Ratio=(Loans Payable + CP + Bond)/Shareholders' Equity.

投資指標 Per Share Data

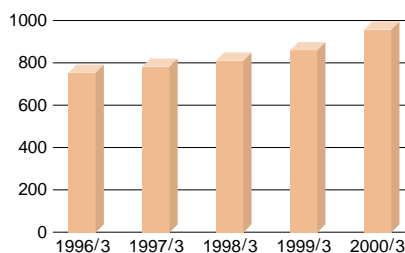
一株当たり当期純利益

Earnings per Share(EPS)



一株当たり純資産

Book Value per Share(BPS)



		1996/3	1997/3	1998/3	1999/3	2000/3
一株当たり当期純利益(円)	Earnings per Share(¥)	37.41	37.57	32.39	23.76	44.25
一株当たり純資産(円)	Book Value per Share(¥)	756.23	785.29	809.17	862.06	952.67

貸借対照表
Balance Sheet

(百万円 / ¥millions)

	1999/3	2000/3
資産の部 Assets		
流動資産 Current assets	182,010	190,173
1. 現金及び預金 Cash and deposits with banks	5,651	4,682
2. 受取手形 Trade notes receivable	36,907	35,297
3. 売掛金 Trade accounts receivable	117,598	125,215
4. 有価証券 Marketable securities	4,117	4,998
5. 自己株式 Treasury stock	0	0
6. 商品 Inventories	14,274	14,571
7. 前渡金 Advance payment	165	41
8. 繰延税金資産 Deferred tax assets	—	880
9. その他の流動資産 Other current assets	4,325	5,360
10. 貸倒引当金 Allowance for doubtful accounts	1,030	873
固定資産 Fixed assets	59,218	59,926
1. 有形固定資産 Tangible fixed assets	9,554	9,360
(1) 建物 Buildings	(5,136)	(4,460)
(2) 構築物 Structures	(411)	(345)
(3) 機械装置 Machinery and equipment	(401)	(382)
(4) 車両運搬具 Vehicles	(18)	(14)
(5) 工具器具備品 Tools, furniture and fixtures	(804)	(978)
(6) 土地 Land	(2,781)	(3,178)
2. 無形固定資産 Intangible fixed assets	102	77
3. 投資その他の資産 Investments and other assets	49,561	50,488
(1) 投資有価証券 Investments in securities	(38,098)	(37,875)
(2) 関係会社株式 Investment in subsidiaries	(7,358)	(7,407)
(3) 関係会社出資金 Other investment in subsidiaries	(24)	(34)
(4) 長期貸付金 Long-term loans receivable	(957)	(594)
(5) 繰延税金資産 Deferred tax assets	(—)	(1,798)
(6) その他の投資等 Other investments	(3,209)	(2,851)
(7) 貸倒引当金 Allowance for doubtful accounts	(87)	(74)
資産合計 Total assets	241,229	250,099

	1999/3	2000/3
負債の部 Liabilities		
流動負債 Current liabilities	135,638	134,598
1. 支払手形 Trade notes payable	6,615	5,105
2. 買掛金 Trade accounts payable	102,848	107,698
3. 短期借入金 Short-term loans payable	6,891	7,229
4. コマーシャルペーパー Commercial paper	4,000	3,000
5. 未払金 Accrued payment	1,961	1,940
6. 未払法人税等 Income taxes payable	3,742	380
7. 未払費用 Accrued expenses	3,304	3,322
8. 前受金 Advance received	142	135
9. 預り金 Deposits received	2,768	2,411
10. 前受収益 Deferred income	21	14
11. その他の流動負債 Other current liabilities	3,342	3,359
固定負債 Fixed liabilities	3,559	9,537
1. 社債 Bond	—	7,000
2. 長期借入金 Long-term loans payable	500	500
3. 退職給与引当金 Reserve for employees' retirement	1,730	1,365
4. 役員退職慰労引当金 Reserve for directors' retirement	1,329	672
負債合計 Total liabilities	139,197	144,136
資本の部 Shareholders' equity		
資本金 Capital stock	9,699	9,699
資本準備金 Additional paid-in capital	9,634	9,634
利益準備金 Legal reserve	2,424	2,424
その他の剰余金 Retained earnings	80,272	84,203
1. 圧縮記帳積立金 Reserve for advanced depreciation	31	16
2. 別途積立金 Other reserves	75,510	76,510
3. 当期末処分利益 Unappropriated retained earnings	4,731	7,677
資本合計 Total shareholders' equity	102,031	105,963
負債及び資本合計 Total liabilities and shareholders' equity	241,229	250,099

損益計算書

(百万円 / ¥millions)

Income Statement

	1999/3	2000/3
売上高 Sales	490,672	489,639
売上原価 Cost of sales	454,857	455,142
売上総利益 Gross Profit	35,815	34,496
販売費及び一般管理費 Selling, general and administrative expenses	30,422	30,137
営業利益 Operating income	5,392	4,359
営業外収益 Non-operating income	4,160	4,259
1. 受取利息 Interests received	(635)	(529)
2. 受取配当金 Dividends received	(1,617)	(1,970)
3. その他の営業外収益 Other non-operating income	(1,907)	(1,759)
営業外費用 Non-operating expenses	2,799	2,599
1. 支払利息及び割引料 Interest and discount expenses	(330)	(265)
2. 有価証券評価損 Loss on devaluation of investment securities	(1,775)	(1,420)
3. その他の営業外費用 Other non-operating expenses	(692)	(913)
経常利益 Ordinary income	6,753	6,020
特別利益 Extraordinary gains	822	264
1. 固定資産処分益 Gains on sales of fixed assets	(430)	(91)
2. 前期損益修正 Prior-term adjustment	(391)	(172)
特別損失 Extraordinary losses	248	93
1. 固定資産処分損 Losses on sales of fixed assets	(248)	(93)
税引前当期純利益 Net income before taxes	7,327	6,190
法人税、住民税及び事業税 Income taxes	3,863	1,874
法人税等調整額 Deferred taxes	—	189
当期純利益 Net income	3,464	4,127
前期繰越利益 Balance carried forward from the previous year	3,621	2,514
過年度税効果調整額 Prior-term adjustment of defferd taxes	—	2,868
税効果会計適用に伴う圧縮記帳積立金取崩額 Reversal of advanced depreciation caused by tax effect accounting	—	12
合併による未処分利益受入額 Increase of unappropriated retained earnings by merger	—	272
自己株式消却額 Common stock repurchased and cancelled	2,355	2,117
当期末処分利益 Unappropriated retained earnings	4,731	7,677

貸借対照表
Balance Sheet

(百万円 / ¥millions)

	1999/3	2000/3
資産の部 Assets		
流動資産 Current assets	223,392	236,393
1. 現金及び預金 Cash and deposits with banks	18,303	18,451
2. 受取手形及び売掛金 Trade notes and accounts receivable	172,491	179,175
3. 有価証券 Marketable securities	4,155	4,998
4. 棚卸資産 Inventories	25,531	27,824
5. 繰延税金資産 Deferred tax assets	—	1,406
6. その他の流動資産 Other current assets	4,218	5,699
7. 貸倒引当金 Allowance for doubtful accounts	1,307	1,163
固定資産 Fixed assets	75,132	80,264
1. 有形固定資産 Tangible fixed assets	19,412	22,110
(1) 建物及び構築物 Buildings and structures	(9,092)	(9,487)
(2) 土地 Land	(6,317)	(7,074)
(3) その他の有形固定資産 Other tangible fixed assets	(4,003)	(5,548)
2. 無形固定資産 Intangible fixed assets	140	157
3. 投資その他の資産 Investments and other assets	55,579	57,996
(1) 投資有価証券 Investments in securities	(49,992)	(49,055)
(2) 長期貸付金 Long-term loans receivable	(457)	(331)
(3) 繰延税金資産 Deferred tax assets	(—)	(2,890)
(4) その他の投資等 Other investments	(5,353)	(5,882)
(5) 貸倒引当金 Allowance for doubtful accounts	(224)	(162)
資産合計 Total assets	298,524	316,657

	1999/3	2000/3
負債の部 Liabilities		
流動負債 Current liabilities	159,940	159,815
1. 支払手形及び買掛金 Trade notes and accounts payable	118,223	123,530
2. 短期借入金 Short-term loans payable	18,426	17,181
3. コマーシャルペーパー Commercial paper	4,000	3,000
4. 未払法人税等 Income taxes payable	4,744	1,519
5. その他の流動負債 Other current liabilities	14,546	14,585
固定負債 Fixed Liabilities	7,802	15,609
1. 社債 Bond	—	7,000
2. 長期借入金 Long-term loans payable	2,252	2,500
3. 退職給与引当金 Reserve for employees' retirement	3,906	4,427
4. 役員退職慰労引当金 Reserve for directors' retirement	1,618	1,163
5. その他の固定負債 Other fixed liabilities	24	518
負債合計 Total liabilities	167,742	175,424
少数株主持分 Minority interests		
少数株主持分 Minority interests	4,853	6,394
資本の部 Shareholders' equity		
資本金 Capital stock	9,699	9,699
資本準備金 Additional paid-in capital	9,634	9,634
連結剰余金 Consolidated surplus	106,594	115,503
自己株式 Treasury stock	0	0
資本合計 Total shareholders' equity	125,929	134,838
負債、少数株主持分及び資本合計 Total liabilities, minority interests and shareholders' equity	298,524	316,657

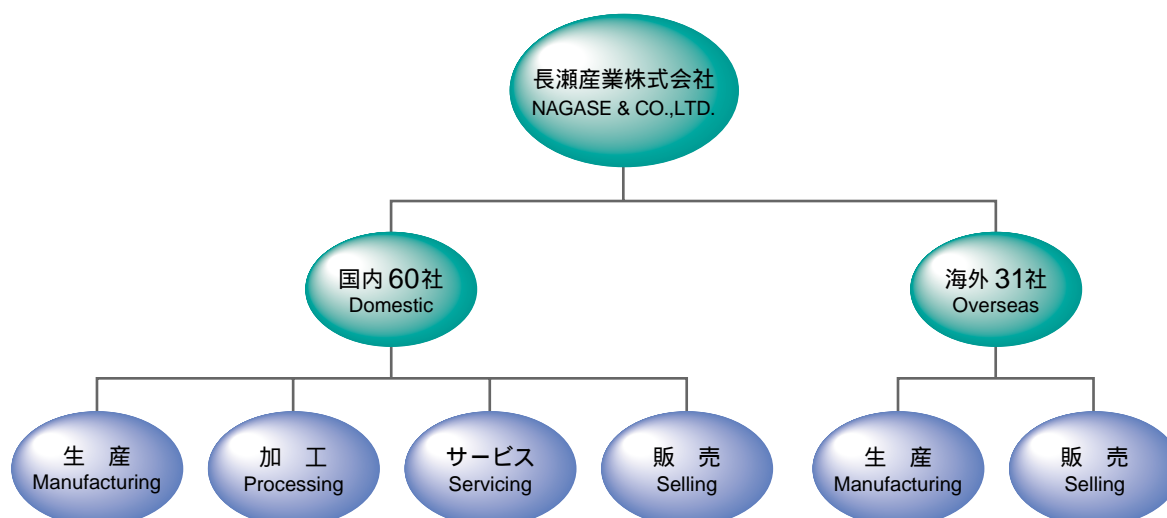
損益及び剰余金結合計算書 (百万円 / ¥millions)
Income Statement & Surplus Statement

	1999/3	2000/3
売上高 Sales	563,222	568,293
売上原価 Cost of sales	510,007	513,006
売上総利益 Gross profit	53,214	55,287
販売費及び一般管理費 Selling, general and administrative expenses	45,423	47,139
営業利益 Operating income	7,791	8,147
営業外収益 Non-operating income	4,280	4,959
1. 受取利息 Interests received	(827)	(731)
2. 受取配当金 Dividends received	(1,120)	(1,359)
3. 持分法による投資利益 Investment profit on equity method	(261)	(770)
4. その他の営業外収益 Other non-operating income	(2,072)	(2,098)
営業外費用 Non-operating expenses	3,570	3,221
1. 支払利息 Interest expenses	(1,093)	(758)
2. その他の営業外費用 Other non-operating expenses	(2,477)	(2,463)
経常利益 Ordinary income	8,501	9,885
特別利益 Extraordinary gains	886	604
特別損失 Extraordinary losses	496	152
税金等調整前当期純利益 Net income before taxes	8,891	10,337
法人税、住民税及び事業税 Income taxes	5,197	3,486
法人税等調整額 Deferred taxes	—	143
少数株主利益 Minority interests	133	336
当期純利益 Net income	3,560	6,371
連結剰余金期首残高 Consolidated surplus at beginning of year	103,196	106,594
連結剰余金増加高 Increase of consolidated surplus	3,473	5,884
1. 連結会社増加に伴う剰余金増加額 Increase of consolidated surplus by new subsidiaries	(1,141)	(260)
2. 持分法適用会社増加に伴う剰余金増加額 Increase of consolidated surplus by new affiliates	(2,331)	(885)
3. 過年度税効果調整額 Prior-term adjustment of defferd taxes	(一)	(4,466)
4. 合併による未処分利益受入額 Increase of unappropriated retained earnings by merger	(一)	(272)
連結剰余金減少高 Decrease of consolidated surplus	3,635	3,346
1. 配当金 Cash dividends	(1,211)	(1,168)
2. 役員賞与 Bonuses to directors	(68)	(59)
3. 自己株式消却額 Common stock repurchased and cancelled	(2,355)	(2,117)
連結剰余金期末残高 Consolidated surplus at end of year	106,594	115,503

キャッシュ・フロー計算書 (百万円 / ¥millions)
Cash Flow Statement

	2000/3
営業活動によるキャッシュ・フロー Cash flows from operating activities	
税金等調整前当期純利益 Net income before taxes	10,337
減価償却費 Depreciation	2,143
受取利息及び受取配当金 Interest and dividends received	2,090
支払利息 Interest expenses	758
為替差益 Exchange profit	437
売上債権の増加額 Increase in notes and accounts receivable	2,657
仕入債務の増加額 Increase in notes and accounts payable	2,929
有価証券の評価替 Loss on devaluation of investment securities	1,448
その他 Others	3,703
小計 Sub total	8,728
利息及び配当金の受取額 Interest and dividends received by cash	2,373
利息の支払額 Interest paid	720
法人税等の支払額 Taxes paid	6,768
営業活動によるキャッシュ・フロー Net cash provided by operating activities	3,613
投資活動によるキャッシュ・フロー Cash flows from Investing activities	
有形固定資産の取得による支出 Payment for purchases of tangible fixed assets	2,929
有形固定資産の売却による収入 Proceeds from sales of tangible fixed assets	1,272
投資有価証券の取得による支出 Payment for purchases of investment securities	3,168
投資有価証券の売却による収入 Proceeds from sales of investment securities	1,601
その他 Others	615
投資活動によるキャッシュ・フロー Net cash provided by investing activities	2,607
財務活動によるキャッシュ・フロー Cash flows from financing activities	
短期借入金の純減額 Decrease in short-term loans	3,298
長期借入金の返済による支出 Repayment of long-term loans	878
社債の発行による収入 Proceeds from issuance of bond	7,000
自己株式の取得による支出 Payment for repurchases of common stock	2,117
配当金の支払額 Dividends paid	1,168
少数株主への配当金の支払額 Dividends paid for minority stockholders	197
その他 Others	632
財務活動によるキャッシュ・フロー Net cash provided by financing activities	28
現金及び現金同等物に係る換算差額 Effect of exchange rate changes on cash and cash equivalents	418
現金及び現金同等物の増加額 Net increase in cash and cash equivalents	559
現金及び現金同等物の期首残高 Cash and cash equivalents at beginning of year	19,734
新規連結に伴う現金及び現金同等物の増加額 Increase in cash and cash equivalents by new consolidated	722
現金及び現金同等物の期末残高 Cash and cash equivalents at end of year	21,015

グループ会社の状況 Performance of Group Companies



連結対象会社(28社)

Consolidated Companies

国内会社	Domestic
生産及び加工	Manufacturing and Processing
帝国化学産業(株)	Teikoku Chemical Industries Co., Ltd.
東拓工業(株)	Totaku Industries Inc.
セツナン化成(株)	Setsunan Kasei Co., Ltd.
ナガセ化成工業(株)	Nagase Chemicals Ltd.
ナガセ電子機器サービス(株)	Nagase Electronic Equipment Service Co., Ltd.
ナガセ生化学工業(株)	Nagase Biochemicals, Ltd.
寿化成工業(株)	Kotobuki Industries Co., Ltd.
販売及びサービス	Selling and Servicing
報映産業(株)	Hoei Sangyo Co., Ltd.
ナガセプラスチック販売(株)	Nagase Plastics Co., Ltd.
ナガセ東海(株)	Nagase Tokai Co., Ltd.
ナガセエレックス(株)	Nagase Elex Co., Ltd.
デルタファインケミカル(株)	Delta Fine Chemical Co., Ltd.
ナガセ研磨機材(株)	Nagase Barrel Finishing Systems Co., Ltd.
ナガセ機械販売(株)	Nagase Machinery Sales Co., Ltd.
ナガセ生化学品販売(株)	Nagase Biochemical Sales Co., Ltd.
ナガセ物流(株)	Nagase Storage & Distribution Co., Ltd.
静岡長瀬(株)	Shizuoka Nagase Co., Ltd.
海外会社	Overseas
ナガセシンガポールリミテッド	Nagase Singapore (Pte) Ltd.
ナガセアメリカコーポレーション	Nagase America Corp.
長瀬(香港)有限公司	Nagase (Hong Kong) Ltd.
ナガセヨーロッパリミテッド	Nagase Europe Limited.
ナガセヨーロッパジーエムビーエイチ	Nagase (Europa) GmbH
ナガセタイランドカンパニー	Nagase (Thailand) Co., Ltd.
ナガセマレーシアビーエイチディ	Nagase (Malaysia) Sdn. Bhd.
長華塑膠(股)有限公司	Nagase Wahlee Plastics Corp.
ナガセカリフォルニアコーポレーション	Nagase California Corp.
台湾長瀬(股)有限公司	Nagase (Taiwan) Co., Ltd.
カナダモールドテクノロジーインコーポレーテッド	Canada Mold Technology Inc.

主要な関係会社の概要 Profile of major affiliated companies

帝国化学産業(株) Teikoku Chemical Industries Co., Ltd.

資本金	Capital stock	¥200,000,000
設立時期	Foundation	1938/06
事業内容	Business lines	医薬品・動物用医薬品・医薬部外品・化粧品・工業薬品・樹脂・その他化学薬品の製造並びに売買及び輸出入 Manufacturing and selling, import and export of pharmaceutical, drug for animal, medical care products, cosmetics, industrial chemicals, resins and other chemicals.

東拓工業(株) Totaku Industries Inc.

資本金	Capital stock	¥270,000,000
設立時期	Foundation	1952/05
事業内容	Business lines	合成樹脂等をもとにした産業用、家庭用ホース、フレキシブルパイプ等の製造販売 Manufacturing and selling of plastic-based industrial and home-use hose, flexible pipe, etc.

報映産業(株) Hiei Sangyo Co., Ltd.

資本金	Capital stock	¥250,000,000
設立時期	Foundation	1974/04
事業内容	Business lines	1. 情報や映像を記録する各種メディアの販売 2. 情報や映像を記録、圧縮、加工する各種機器とシステムの販売 3. 情報や映像のソフトウェアやコンテンツに関わるサービス事業 1. Sale of various recording media for information and image. 2. Sales of various device and system for recording, compression and processing of information & image. 3. Service business relating to software and contents of information & image.

ナガセプラスチック販売(株) Nagase Plastics Co., Ltd.

資本金	Capital stock	¥96,600,000
設立時期	Foundation	1975/03
事業内容	Business lines	プラスチック包装資材及び工業品、成型品、接着品、プラスチック原料、各種機械の販売 Sales of plastic packaging material, industrial products, molded products, adhesives, plastic raw material and other various machine, etc.

ナガセシンガポールリミテッド Nagase Singapore (Pte) Ltd.

資本金	Capital stock	S\$2,700,000
設立時期	Foundation	1975/04
事業内容	Business lines	化学品、染料、合成樹脂、電子材料、機械類の在庫販売、及びそれらに関わるマーケティング活動 Stock sales and it's relating marketing activities of chemicals, dyestuff, synthetic resins, electronic materials, machine and devices etc.

ナガセアメリカコーポレーション Nagase America Corp.

資本金	Capital stock	US\$1,000,000
設立時期	Foundation	1971/04
事業内容	Business lines	染料、化学品、合成樹脂等の販売 Sales of dyestuff, chemicals, synthetic resins, etc.

長瀬(香港)有限公司 Nagase (Hong Kong) Ltd.

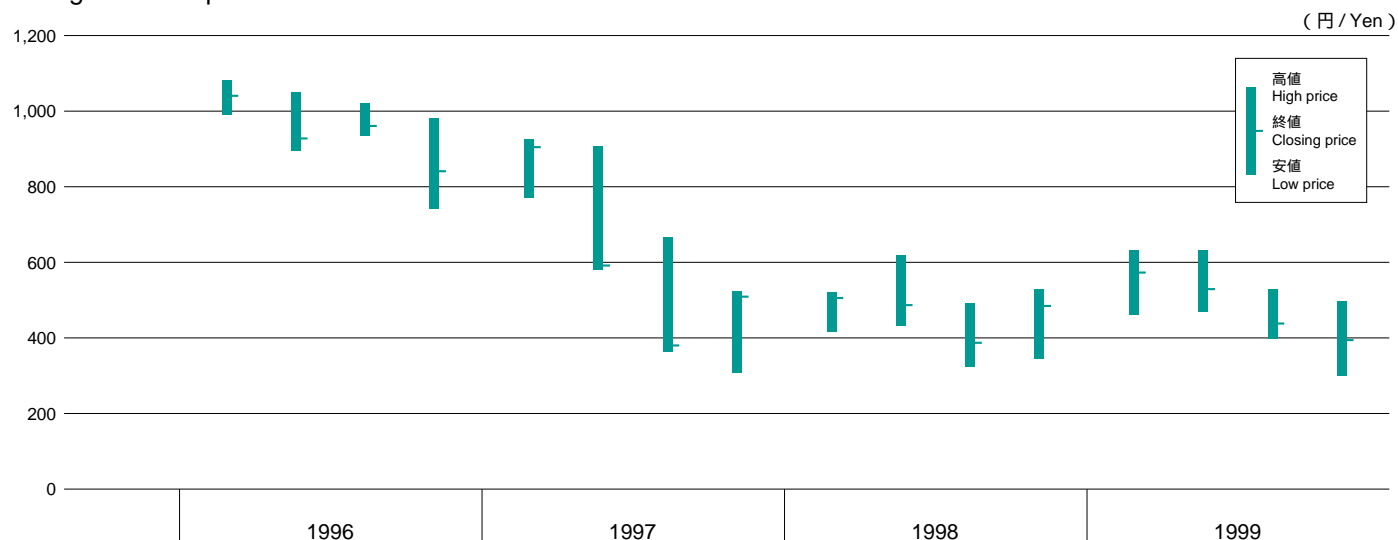
資本金	Capital stock	HK\$3,120,000
設立時期	Foundation	1971/02
事業内容	Business lines	化学品、合成樹脂、成形機、ロボット等の香港、中国市場を中心とした輸出入販売 Import and export of chemicals, synthetic resins, molding machine, robots, etc. mainly in Hong Kong and Chinese markets.

ナガセヨーロッパリミテッド Nagase Europe Ltd.

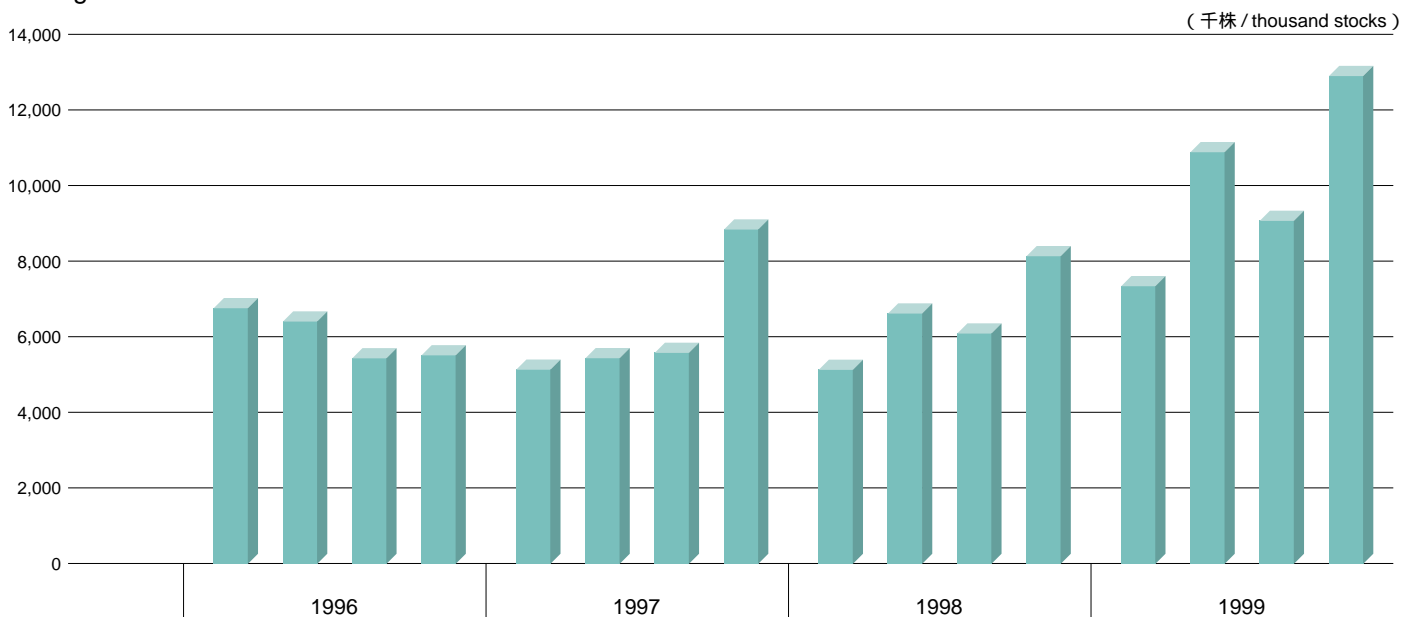
資本金	Capital stock	£300,000
設立時期	Foundation	1998/03
事業内容	Business lines	輸出入及びマーケティング Import and export and marketing.

株式関連 Matters relating to stocks

株価の推移 Change of stock prices



出来高の推移 Change of turnover



株価 Stock prices	1996				1997				1998				1999			
高値 High price	1,080	1,050	1,020	980	925	907	665	525	522	619	489	530	635	630	538	493
安値 Low price	990	897	935	740	770	580	363	308	417	430	323	345	462	470	394	352
終値 Closing price	1,040	925	961	841	907	590	380	509	506	488	387	485	575	529	419	395
出来高 Turnover	6,756	6,417	5,462	5,511	5,131	5,481	5,626	8,813	5,316	6,629	6,064	8,139	7,316	10,863	9,054	12,440

注)上記の数値は東京証券取引所の数値に基づいています。

注) Iは4～6月、IIは7～9月、IIIは10～12月、IVは1～3月の数値を表しています。

注)自己株式消却については、1998年度中で5,349千株(23億円)、1999年度中で4,542千株(21億円)実施いたしました。

Note: Above numeric numbers are based on the one of Tokyo Stock Exchange.

Note: I represents the figures for from April to June, II for from July to September, III for from October to December, and IV for from January to March.

Note: The erasure of treasury stocks have been executed as follows: 5,349 thousand stocks(2.3 billion yen)during FY 1998

4,542 thousand stocks(2.1 billion yen)during FY 1999

会社概要

長瀬産業株式会社

本社

〒550-8668 大阪市西区新町一丁目1番17号
 〒103-8355 東京都中央区日本橋小舟町5番1号

設立

1917年12月

問合せ先

総務部

電話(03)3665-3028 FAX(03)3665-3030
 URL <http://www.nagase.co.jp>

株式名義書換代理人

住友信託銀行株式会社
 大阪市中央区北浜四丁目5番33号

株式の上場

東京証券取引所及び大阪証券取引所第一部上場(1970年8月)

株式の状況

会社が発行する株式の総数 350,109,000株
 発行済株式の総数 141,537,285株

株主数

10,742名

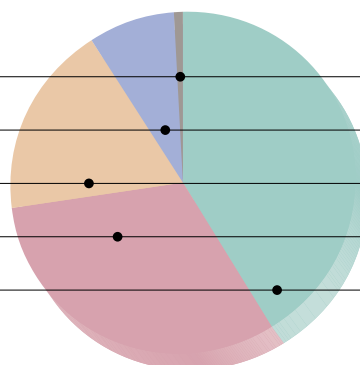
(2000年3月31日現在)

大株主

株主名	当社への出資状況		当社の大株主への出資状況	
	持株数	持株比率	持株数	持株比率
	千株	%	千株	%
株式会社 住友銀行	6,424	4.54	7,270	0.23
住友信託銀行株式会社	5,842	4.13	4,560	0.32
株式会社 東京三菱銀行	5,651	3.99	5,230	0.11
株式会社 東海銀行	4,603	3.25	5,041	0.22
日本生命保険相互会社	4,228	2.99		
長瀬 洋	4,120	2.91		
株式会社 富士銀行	4,068	2.87	3,095	0.09

所有者株式分布状況

証券会社	33名	808千株(0.57%)
外国法人等	81名	11,391千株(8.05%)
その他法人	365名	25,667千株(18.14%)
個人その他	10,178名	44,986千株(31.78%)
金融機関	85名	58,683千株(41.46%)



Securities companies:	33	808 thousand stocks(0.57%)
Foreign corporation, etc:	81	11,391 thousand stocks(8.05%)
Other corporation:	365	25,667 thousand stocks(18.14%)
Private and others:	10,178	44,986 thousand stocks(31.78%)
Financial institutions:	85	58,683 thousand stocks(41.46%)

会計監査人

監査法人 太田昭和センチュリー

Company profile

Nagase & Co., Ltd.

Head office

〒550-8668 1-17, Shinmachi 1-Chome Nishi-ku, Osaka
 〒103-8355 5-1, Kobunacho Nihonbashi Chuo-ku, Tokyo

Foundation

December, 1917

Contact to

General Affairs Department
 Tel(03)3665-3028 Fax(03)3665-3030
 URL: <http://www.nagase.co.jp>

Share transfer agent

Sumitomo Trust & Banking Co., Ltd.
 5-33, Kitahama 4-Chome Chuo-ku, Osaka

Stock listed

Listed at the first section of Tokyo and
 Osaka Stock Exchange(since August, 1970)

Stock status

Number of shares to be issued by the company : 350,109,000
 Number of issued shares : 141,537,285

Number of shareholders

10,742

(as of March 31, 2000)

Major shareholders

Name	Investment to our company		To our Major shareholders	
	No of shares held	Special rate	No of shares held	Special rate
	M shares	%	M shares	%
Sumitomo Bank	6,424	4.54	7,270	0.23
Sumitomo Trust Bank	5,842	4.13	4,560	0.32
Tokyo Mitsubishi Bank	5,651	3.99	5,230	0.11
Tokai Bank	4,603	3.25	5,041	0.22
Nippon Life Ins. Co.	4,228	2.99		
Hiroshi Nagase	4,120	2.91		
Fuji Bank	4,068	2.87	3,095	0.09

Status of proprietary stock distribution

CPA

Century Ota Showa & Co.